

# Guide to Heritage in the Yarra Ranges



Perrin Family Picnic, c.1890, Yarra Ranges Regional Museum Collection.

*The Yarra Ranges Heritage Network was  
formed in the year following the creation  
of the Yarra Ranges Council.*



Yarra Ranges  
**Heritage**  
NETWORK

# Acknowledgement

We respectfully acknowledge the Traditional Owners, the Wurundjeri and Bunurong people, as the custodians of this land. We also pay respect to all Aboriginal community Elders, past and present, who have resided in the area and have been an integral part of the history of this region.

© Copyright Yarra Ranges Heritage Network (YRHN) 2022

*Guide to Heritage in the Yarra Ranges* (2022) is a second revised edition.

This book is copyright. Apart from any fair dealing for the purposes of private study, research, criticism or review as permitted under the Copyright Act, no part may be reproduced by any process without written permission of the YRHN.

## Thanks to the following for their images and support:

April Paterson, Carolyn Ebdon, Dave O'Brien, Glenn Thorpe, Healesville Sanctuary, John Brown, Kevin Phillips, Margaret Tull, Marian Matta, Paula Herlihy, Susan Heywood-Downard and the late Phil Garland, Tom O'Meara and Leigh Baker; State Library of Victoria and UYVHS.

## A note about inclusions

This heritage guide aims to give an overview of sites of heritage significance in the Yarra Ranges, as identified by local history and heritage groups. It is not intended to be exhaustive, and some sites have had to be excluded based on lack of public accessibility and cultural sensitivity, among other reasons.

For further information contact  
[mail@yarraranges.vic.gov.au](mailto:mail@yarraranges.vic.gov.au),  
attention Community Heritage Officer.

This publication is proudly supported  
by Yarra Ranges Council.



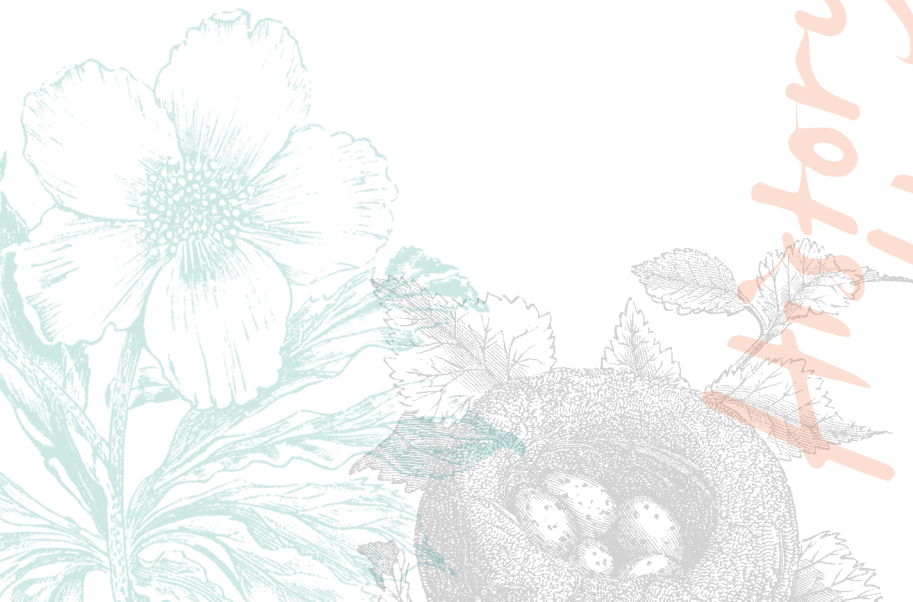
# Yarra Ranges Heritage Network

The Yarra Ranges Heritage Network (YRHN) was formed in the year following the creation of the Yarra Ranges Council. Amalgamation took place on 7 October 1994, and the formation meeting for the YRHN took place on Saturday 24 June 1995.

Representatives are invited and welcomed from any group which identifies as interested in local history and heritage. Around fifteen groups meet regularly. The Network meets approximately four times a year and provides communication between member groups and the Council, along with advocating for, and celebrating, heritage through individual and shared projects. Support is provided by Yarra Ranges Council through the Community Heritage Officer.

Yarra Ranges  
**Heritage**  
NETWORK

History  
Heritage



# Foreword

Yarra Ranges Council boasts a richness and diversity of history and heritage that places it at the forefront of Victorian cultural precincts, from the Indigenous significance of Coranderrk, through to the explorations of Robert Hoddle and to the growth of transport, economic, cultural and domestic life and settlements. This cultural history has been preserved, promoted and made accessible through numerous historical societies and cultural groups.

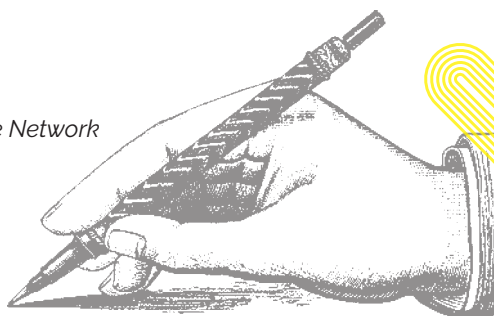
The *Guide to Heritage in the Yarra Ranges* aims to incorporate information about the core Yarra Ranges history groups and numerous other heritage and history-related attractions in Yarra Ranges. Now in its second revised edition, the *Guide to Heritage in the Yarra Ranges* will enhance the cultural experiences of local residents and 'out-of-town' visitors alike.

Thank you to the working group and the Yarra Ranges Community Heritage Officer for their dedication to seeing the Guide through to publication, and to the members of the Yarra Ranges Heritage Network and other major history groups for providing the material for the Guide.

Thank you to the many past and present volunteers who have ensured that the 'stories' of Yarra Ranges history are available to all of us today through collections, publications and museums. And finally, a tribute to the pioneers and community 'shapers' who developed Yarra Ranges into the remarkable entity it is today.

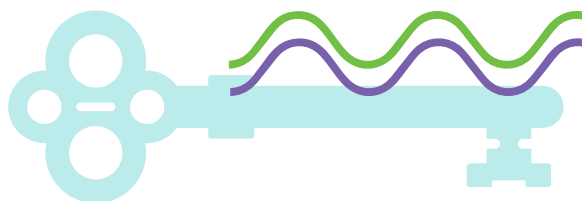
Enjoy your visit.

Sue Thompson,  
Chair, Yarra Ranges Heritage Network

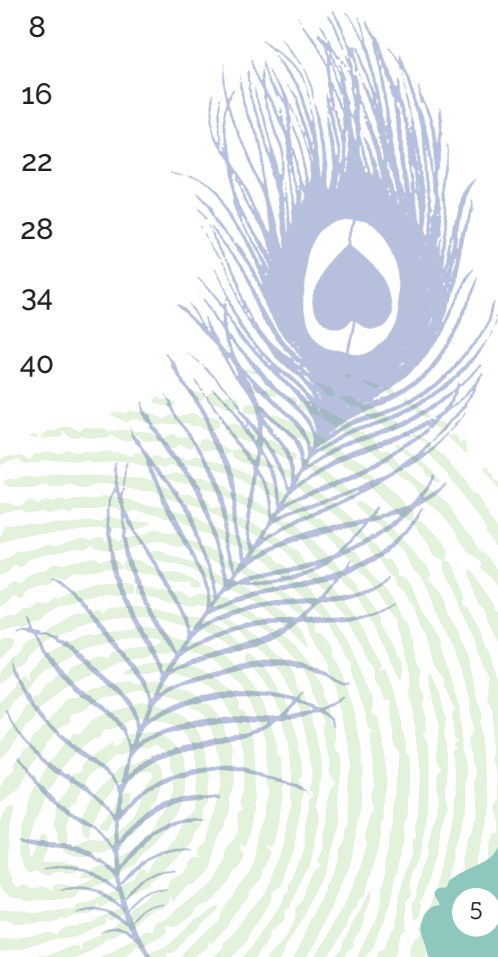
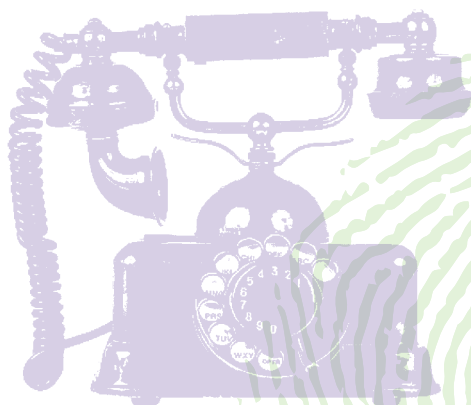




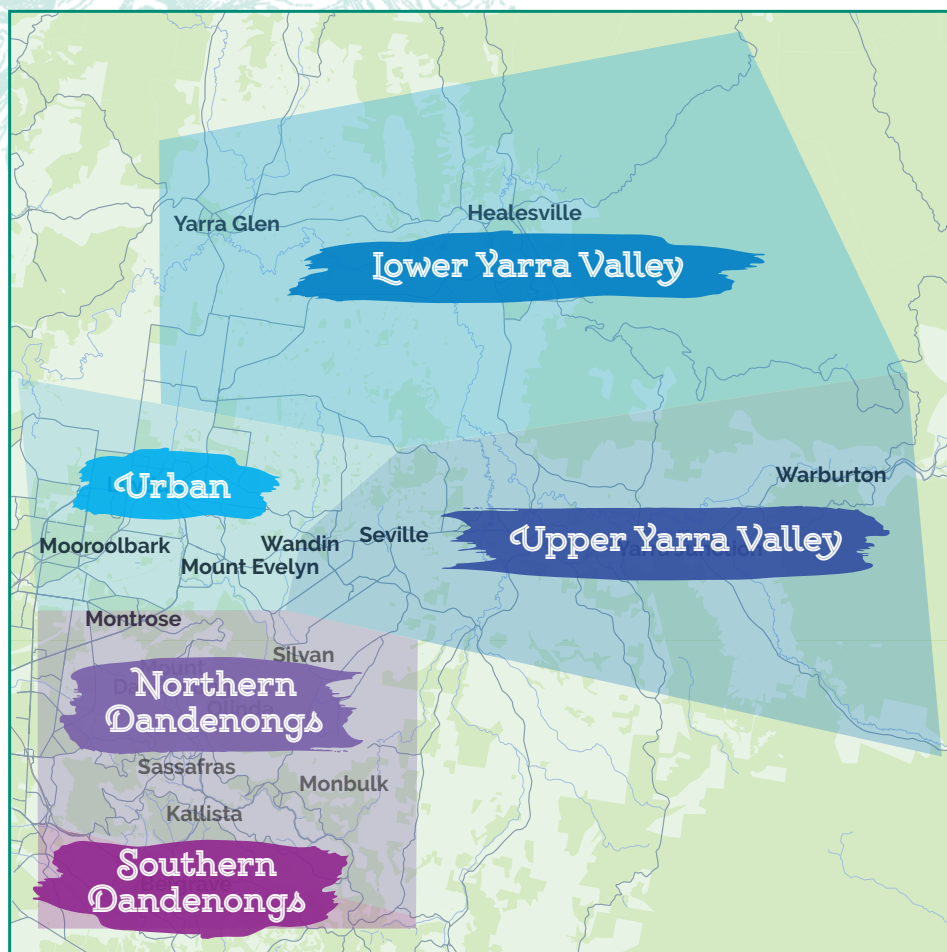
# Contents

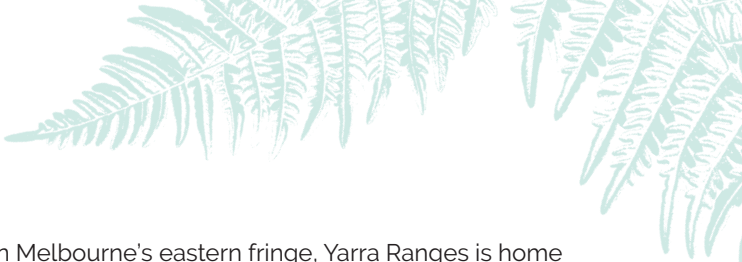


Acknowledgement	2
Yarra Ranges Heritage Network	3
Foreword	4
Yarra Ranges	6
Urban	8
Lower Yarra Valley	16
Upper Yarra Valley	22
Northern Dandenongs	28
Southern Dandenongs	34
Yarra Ranges Heritage Groups	40



# Yarra Ranges





Located on metropolitan Melbourne's eastern fringe, Yarra Ranges is home to a population of 145,000. Yarra Ranges covers approximately 2,500 square kilometres and stretches from the densely populated outer suburbs up into the surrounding foothills, agricultural valleys and forested areas of the Great Dividing Range.

Yarra Ranges is one of Victoria's largest, most varied and scenic municipalities and has the largest area of any metropolitan council. There are more than 55 suburbs, townships, small communities and rural areas in the Yarra Ranges.



With over 40,000 years of continuous human presence, our heritage includes tangible elements and intangible cultures that connect us with the lives of the Bunurrong and Wurundjeri people and the traditional Wurundjeri-Balluk territory.

Since colonisation and European settlement in the region from the 1830s, key Victorian people and industries have made their mark on the unique landscape of the region. These histories are reflected in the sites outlined in this guide.









## How to Use this Guide

Yarra Ranges has been divided into five regions. Each region has a separate map and legend to historical and heritage features of its area.

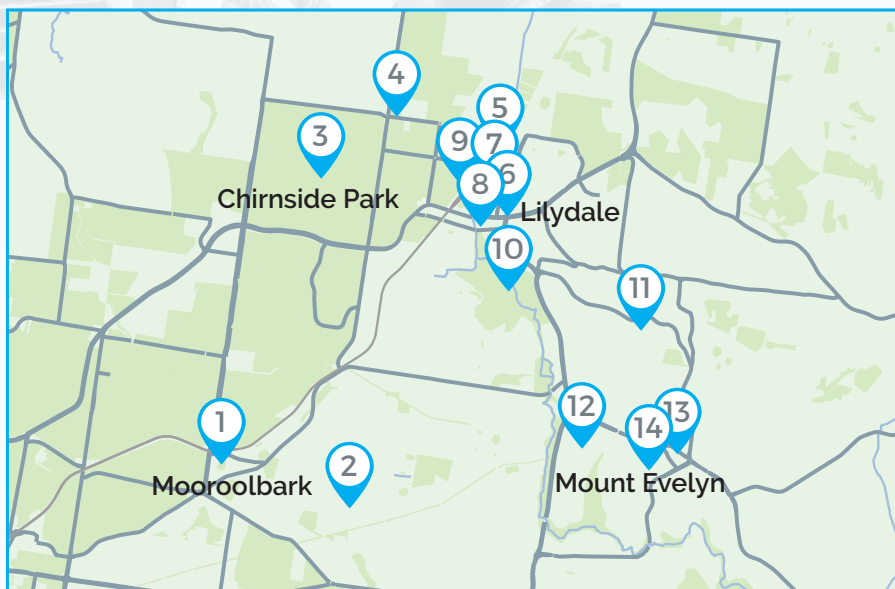
### REGIONS

-  Urban
-  Lower Yarra Valley
-  Upper Yarra Valley
-  Northern Dandenongs
-  Southern Dandenongs

### ICON LEGEND

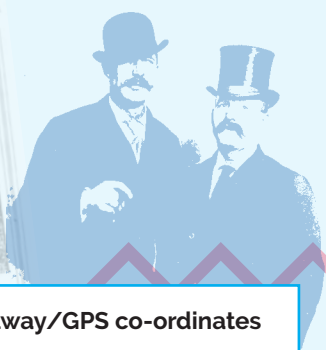
-  Address
-  Contact number
-  Contact email
-  Opening times
-  Tour information
-  Cost involved
-  Free entry
-  Website address

# Urban



*This map is not to scale. Please use Melway or GPS co-ordinates for accurate location.*





	Description	Melway/GPS co-ordinates
1	Hookey Park	51 G1/(-37.7868, 145.3127)
2	Bickleigh Vale	52 A2/(-37.7907, 145.3301)
3	Chirside Park Country Club	37 K3/(-37.7502, 145.3259)
4	Grave of Dame Nellie Melba	38 B2/(-37.7340, 145.3455)
5	Old Lillydale Court House	38 B4/(-37.7538, 145.3540)
6	Athenaeum Theatre	38 B4/(-37.7556, 145.3540)
7	Yarra Ranges Regional Museum	38 B4/(-37.7556, 145.3538)
8	Melba Park & David Mitchell Memorial Gates	38 B4/(-37.7563, 145.3535)
9	Mafeking Tree	38 B4/(-37.7562, 145.3521)
10	Lillydale Lake and Cashin's Mill	281 B6/(-37.7629, 145.3543)
11	First Aid Post Reserve	118 A8/(-37.7702, 145.3750)
12	Mount Evelyn Puddle Dam	38 H12/(-37.7822,145.3671)
13	Mount Evelyn Station House	118 B12/(-37.7835,145.3730)
14	Mount Evelyn Aqueduct Walk	120 G7/(-37.8090,145.4032)



## 1 Hookey Park

- 📍 Charles St, Mooroolbark
- ☎ 1300 368 333 🕒 24 hours
- 🌐 [yarraranges.vic.gov.au/Experience/Parks-Recreation/Hookey-Park](http://yarraranges.vic.gov.au/Experience/Parks-Recreation/Hookey-Park)

This early public meeting place was named for Jack Hookey, Headmaster of Mooroolbark State school from 1937 to 1947, and secretary of the park for twenty years. The park contains information on Edna Walling, Jack Hookey and Bob Gatherum, and War Memorial.



## 2 Bickleigh Vale Village

- 📍 Pembroke Rd, Mooroolbark 🕒 No public access to gardens
- 🌐 [bickleighvalevillage.com.au](http://bickleighvalevillage.com.au)

Edna Walling's 1920s cottage and garden village.



## 3 “Mooroolbark Park” now Chirnside Park Country Club

- 📍 68 Kingswood Dr, Chirnside Park
- ☎ 9726 7788
- 🕒 Mon – Fri gam til late.  
Sat gam till late. Sun 10am till late
- 🌐 [chirnsideparkcc.com.au](http://chirnsideparkcc.com.au)



Chirnside Park Country Club welcomes visitors. The property boasts an oak tree planted when the Chirnsides' original homestead was built in 1853.

## 4 Grave of Dame Nellie Melba GBE



- 📍 Lilydale Lawn Cemetery, 120 Victoria Rd, Lilydale
- 🕒 7.00am - 5.30pm; 7.00am - 7.30pm (during daylight savings)
- 👉 Lilydale Lawn Cemetery offers a heritage walk with 26 signposts throughout the grounds. Contact Lilydale & District Historical Society for guided tours.

Born Helen Porter Mitchell on May 19, 1861, singer Dame Nellie Melba died on 23 February 1931, at which time the world went into mourning. After a funeral service in Scots Church, Collins Street, the hearse travelled to Lilydale, where the coffin was moved to a gun carriage for the final journey to the Lilydale Cemetery. Fittingly, on Melba's grave are Mimi's words from *La Bohème*: *Addio senza rancore*, 'Farewell without bitterness'.

## 5 Old Lilydale Court House



- 📍 61 Castella St, Lilydale 📞 0475 219 884 💰 Free
- 🕒 By appointment only. Friday 1pm-4pm and Saturday to Monday 11am-4pm. Sundays are preferred.
- 🌐 [lilydalehistorical.com.au](http://lilydalehistorical.com.au)

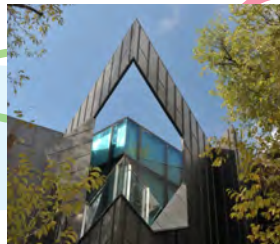
Built in 1876, the building operated as a Court House for over 100 years, until the court moved to Ringwood in 1997. It is the oldest civic building in the Shire and was listed on the National Trust of Victoria's register in 1970 and the National Estate Register of the Australian Heritage Commission in 1978. It is now the home of the Lilydale & District Historical Society, who share the building with Yarra Ranges U3A.

## 6 Athenaeum Theatre

📍 39-41 Castella St, Lilydale 📞 9735 1777 🌐 See web site 💰 See web site  
🌐 [lilydaleatc.com](http://lilydaleatc.com)

## 7 Yarra Ranges Regional Museum

📍 35-37 Castella St, Lilydale 📞 9294 6511 💰 Free  
🕒 12-4pm Wednesday to Sunday  
🌐 [yarraranges.vic.gov.au/Experience/Yarra-Ranges-Regional-Museum](http://yarraranges.vic.gov.au/Experience/Yarra-Ranges-Regional-Museum)



Yarra Ranges Regional Museum opened in 2011 after a redevelopment of the former Lillydale Shire Offices. With stunning architectural design set in tranquil surrounds, the museum features exhibition spaces, programs for all ages and abilities, museum shop and café.

The collection and exhibition program focuses on the region, including the urban area, Dandenongs and Yarra Valley. A range of historic and present-day exhibitions and programs bring art, artefacts and fascinating stories to life.

## 8 Melba Park and David Mitchell Memorial Gates

📍 Cnr Castella and Market Sts, Lilydale



When the township was laid out in 1860, this area was set aside as a reserve for the people. In 1927, in recognition of the great contribution made by Dame Nellie Melba, the area was re-named Melba Park. Melba was proud and flattered that it was named after her, and officiated in declaring the park open.

David Mitchell was the father of Dame Nellie Melba and owner of Cave Hill quarry, a major employer of the district. Melba designed and organised the building of the gates erected in his memory. Melba's only grandchild, Pamela Armstrong, laid the foundation stone for the gates on 5 November 1928.



## 9 Mafeking Tree

📍 Melba Park, between Museum and Croquet Club

The *Quercus robur* oak tree was planted in 1900 to mark the end of the 209 day siege of the British Garrison at Mafeking, commanded by Colonel Baden-Powell, during the Boer War.

## 10 Lillydale Lake & Cashin's Mill

📍 Swansea Rd, Lilydale

🌐 [yarraranges.vic.gov.au/Experience/Parks-Recreation/Lillydale-Lake](http://yarraranges.vic.gov.au/Experience/Parks-Recreation/Lillydale-Lake)

The 28 ha Lillydale Lake was built to stop the flooding of Lilydale's lower Main Street and to provide a local recreational facility. It was officially opened on 7 July 1989. Cashin's Mill, built in the 1850s, was Lilydale's first industrial building. Local farmers, including Aboriginal farmers from Coranderrk, brought their wheat to be ground there. The mill was destroyed by fire on 25 March 1915.

## 11 The Blanche Mitchell Competition Ground (The First Aid Post)

📍 David Rd, Mt Evelyn

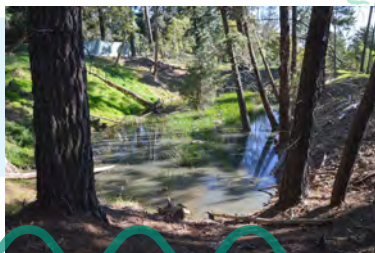
This bushland reserve beside the Lilydale to Warburton Rail Trail was the site of competitions between Railway First Aiders (1940s-1990s). The open-fronted sheds that served as backdrops for 'accident' scenes can still be seen. Blanche Mitchell, who donated the land in 1944, was a daughter-in-law of entrepreneur David Mitchell and sister-in-law of Dame Nellie Melba. Interpretive signage at site.



## 12 The Puddle Dam (Water Race Trail)

📍 *Between 112 and 114 Birmingham Rd, Mt Evelyn*

Opened in 1905, the water race provided Lilydale's original water supply from the Cascades on Olinda Creek. Part of the route can still be followed as the Water Race Trail. The race ended in a 'clay puddled dam' (the Puddle Dam), which is largely intact. Interpretive signage at site.



## 13 Mt Evelyn Station House (The Lilydale to Warburton Rail Trail)

📍 *50 Wray Crescent, Mt Evelyn* 📞 *9736 1177* 🌐 *mtevelynch.com.au*  
🕒 *Community House: Mon – Thurs 9am to 4pm*  
*Reading Room: Mon – Thurs 10am-4pm, Fri 12-4pm*

At 738 feet (225 metres) above sea level, Mount Evelyn was the highest point on the Lilydale to Warburton railway. The station was connected to Silvan via a flying fox to supply materials for the construction of Silvan Reservoir. Mt Evelyn Community House is located in the Station House, which was the original Stationmaster's residence, dating from 1911.



## 14 Mt Evelyn Aqueduct Walk

📍 *Swansea Road to Hunter Road.*

The aqueduct through Mt Evelyn, constructed late 1920s-1933, is now preserved as the Mt Evelyn Aqueduct Walk. The section between Hunter Road and Priestley Crescent passes through bushland and still has its original concrete lining and bridges. The Aqueduct Walk connects to Silvan via the Olinda Creek Trail.

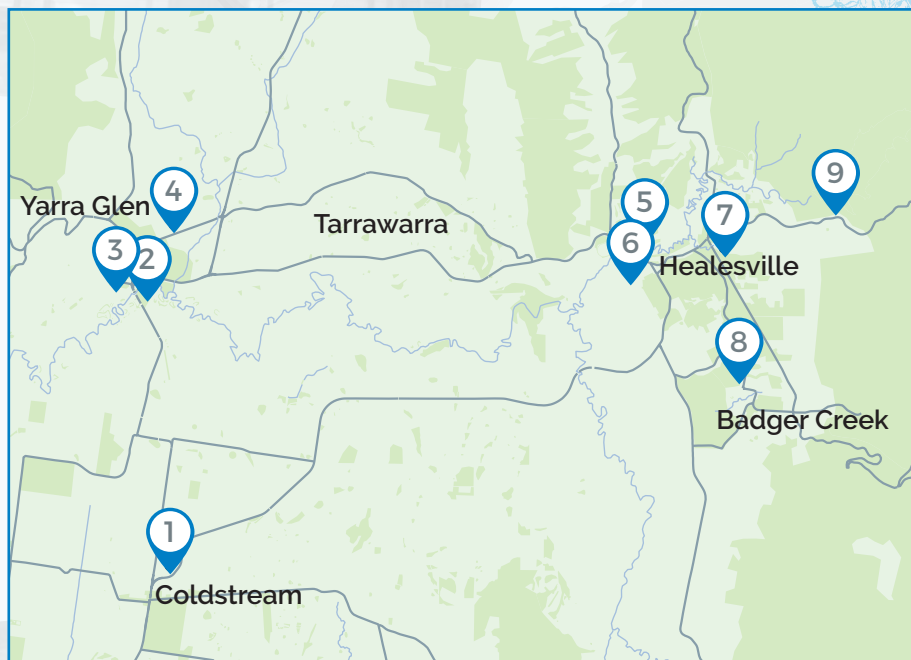




The House Bangol Garidaga Notebook was  
written in the year following the creation  
of the House Bangol Council.



# Lower Yarra Valley



*This map is not to scale. Please use Melway or GPS co-ordinates for accurate location.*







*Murray  
Lawn*

	Description	Melway/GPS co-ordinates
1	Coombe Yarra Valley	118 A8/(-37.7191, 145.3811)
2	Murrup Brarn Yarra Flats Billabongs	275 A3/(-37.6650, 145.3772)
3	Yarra Glen Railway Station	274 K2/(-37.6622, 145.3715)
4	Gulf Station (National Trust)	267 C11/(-37.6487, 145.3855)
5	Healesville Railway Station	278 A1/(-37.6547, 145.5107)
6	Healesville Courthouse and Police Lockups	278 A1/(-37.6562, 145.5109)
7	Queens Park	278 E1/(-37.6561, 145.5257)
8	Healesville Sanctuary	278 F8/(-37.6814, 145.5313)
9	Maroondah Reservoir Park	270 K/(-37.6446, 145.5503)
10	Coranderrk	Not currently open to the public

# Lower Yarra Valley

## 1 Coombe Yarra Valley

- 📍 673-675 Maroondah Hwy, Coldstream 📞 9739 0173
- 💰 Free entry to Coombe and historical gallery, bookings essential for house and garden tours 🕒 Wed – Sun 10am – 5pm
- 🌐 [coombeyarravalley.com.au](http://coombeyarravalley.com.au)

Dame Nellie Melba's Australian home, Coombe Cottage, has been developed to include an historical gallery, house tours in winter, and garden tours. Ring for bookings. There is also a restaurant, cellar door and shop.

## 2 Murrup Brarn Yarra Flats Billabongs – Battle of Yering Marker



*Murrup  
Brarn*

- 📍 Melba Hwy between Chateau Yering and Vasey Houghton Bridge, Yarra Glen

The 'Battle of Yering' occurred in 1840 when police, under the direction of Commander H.F. Gisborne, sought to disarm local Wurundjeri who had been conducting an armed resistance in and around the area known today as Yarra Glen. The police focussed on capturing local leader Jaga Jaga (whom they called Jackie Jackie). The police failed in both their objects, to capture Jaga Jaga and disarm the Wurundjeri. The Battle of Yering was one of the first serious engagements of a three-year land war.

### 3 Yarra Glen Railway Station - (Yarra Valley Railway)

📍 40 Oliver St, Yarra Glen  
🌐 [yvr.org.au](http://yvr.org.au)

### 4 Gulf Station (National Trust)

📍 1029 Melba Hwy, Yarra Glen  
☎ 9656 9889 💰 Check when booking 🕒 First Thursday of each month  
10am - 2pm, Group bookings for 10+ by appointment  
🌐 [nationaltrust.org.au/places/gulf-station/](http://nationaltrust.org.au/places/gulf-station/)

Established in the 1850s, Gulf Station was farmed from 1854 by the Scottish Bell family for nearly 100 years. The property remained in the family until after WWII, when a soldier settler, J. Smedley, took over. Gulf Station supplied produce to gold miners and bred horses for the Army.

The State Government purchased the remnants of the property (16 ha) in 1976 and appointed the National Trust as the Committee of Management. The Trust has restored the slab buildings and cottage garden.

### 5 Healesville Railway Station (Yarra Valley Railway)

📍 20 Healesville-Kinglake Road ☎ 5962 2490  
💰 Refer to website 🕒 Refer to website  
🌐 [yvr.org.au](http://yvr.org.au)

The Yarra Valley Railway is a volunteer, not-for-profit community organisation based at the heritage listed Healesville Railway Station. It operates passenger train services from Healesville Station to Tarrawarra Winery on the heritage Walker Railmotor RM22.



## 6 Healesville Courthouse including Cell Blocks

📍 42 Harker St, Healesville 💰 Free

Healesville's timber Courthouse was opened in 1890 and is one of the few timber buildings in its original state in the township. The Courthouse is of historical importance for its association with Joseph Anderson Panton, Healesville's first magistrate, who later became Chief Magistrate in Melbourne. Panton mapped the Yarra Ranges and named Mount Donna Buang. Pantons Gap is named after him. The court house closed in 1990, as part of a rationalisation of Victoria's Courthouses. The portable Police lockups were built circa 1866, and are now positioned behind the old Courthouse. They are among the last remaining examples of portable lockups in Victoria.



## 7 Queens Park

📍 36 Don Rd, Healesville 💰 Free



## 8 Healesville Sanctuary (Zoos Victoria)

📍 Badger Creek Rd, Healesville 💰 See website  
🕒 Open every day of the year from 9 am to 5 pm  
📞 zoo.org.au 📞 1300 966 784

The Sir Colin MacKenzie Sanctuary for Australian fauna and flora was officially opened on 30 May 1934. The Healesville Sanctuary property was part of the original Coranderrk Aboriginal Station.





## 9 Maroondah Reservoir Park

- 📍 Maroondah Hwy, Healesville 🆓 Free 📞 131 963
- 🕒 depends on season – see website for details
- 🔗 [parks.vic.gov.au/places-to-see/parks/maroondah-reservoir-park](https://parks.vic.gov.au/places-to-see/parks/maroondah-reservoir-park)

The building of Maroondah Reservoir was the largest government undertaking in Healesville. The wall of the reservoir is a gravity arch design and cyclopean rubble concrete construction. The surface area of the reservoir is 197 ha with a total available capacity 22,000 ML. Construction commenced in 1920 and was completed in 1927. During this period an aerial ropeway operated between the Healesville Railway Station and the site, transporting cement and sand used in the construction of the Reservoir.



## 10 Coranderrk

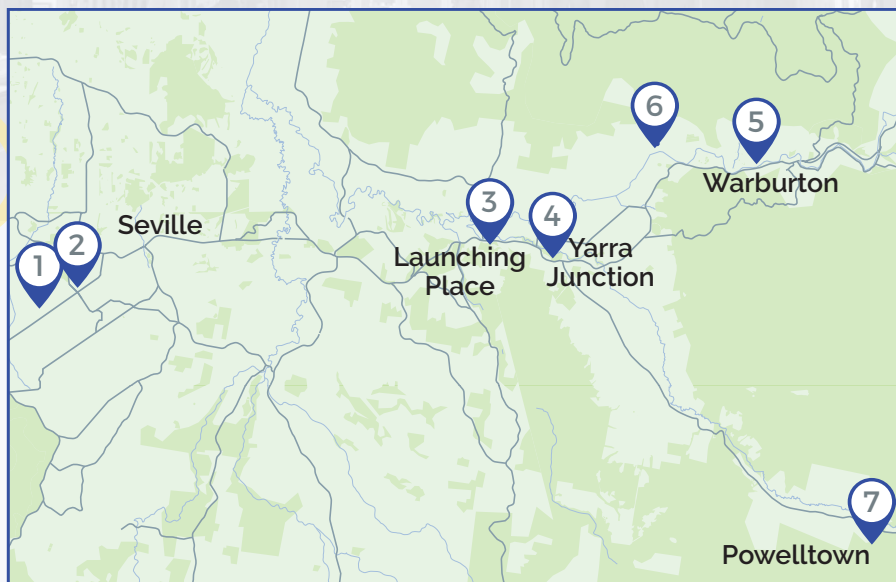
- 🔗 [coranderrk.com](http://coranderrk.com)
- ✉ [wandoonestate@gmail.com](mailto:wandoonestate@gmail.com)

*Note: Coranderrk is not currently open to the public but is a key site in Yarra Ranges' and Australian history. The Coranderrk Cemetery may be accessed with permission from the Wurundjeri Land Council. 📞 [wurundjeri.com.au/contact](http://wurundjeri.com.au/contact).*

Coranderrk Aboriginal Station was established in 1863 and, at its largest, comprised 4,750 acres. Simon Wonga, William Barak and the many others who lived at Coranderrk worked to build a place of self-sufficiency and self-governance. They cleared the land, built homes, a kitchen, a store, a dairy, hop kilns, a school and a dormitory, which became the hub of the village. They fought legally to retain this home. However in 1924, all but a small group of people were moved to Lake Tyers. In 1998, a 200 acre section of the original station, including the Superintendent's house, was purchased with funding from the Indigenous Land Corporation. Wandoon Estate Aboriginal Corporation was established to manage Coranderrk.



# Upper Yarra Valley



*This map is not to scale. Please use Melway or GPS co-ordinates for accurate location.*

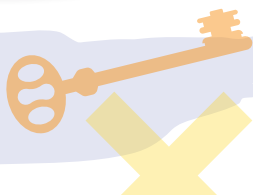


	Description	Melway/GPS co-ordinates
1	Mont De Lancey Historic Homestead	121 B2/(-37.7894, 145.4231)
2	Intersection of Hunter, Beenak and Quayle Roads	121 D2/(-37.7905, 145.4369)
3	Wanderslore Sanctuary	287 H6/(-37.7759,145.5840)
4	Upper Yarra Museum	288 D7/(-37.7803, 145.6098)
5	Walhalla - Former Baker, Bootmaker and Jeweller Shop	290 B4/(-37.7534, 145.6893)
6	O'Shannassy Aqueduct Trail	290 E2/(-37.7451, 145.7048)
7	Powelltown Union Church	912 T4/(-37.8632, 145.7499)



# Upper Yarra Valley

## 1 Mont De Lancey Historic Homestead



- 📍 71 Wellington Rd, Wandin North
- 💰 Adults \$10 / Conc \$8 /  
Children free - includes a guided tour.  
Group bookings welcome.
- ☎ 5964 2088  
Two Peas in Their Pod Café - 5964 3484
- 🕒 Wed to Sun 10am – 4.30pm
- 🌐 [montdelancey.org.au](http://montdelancey.org.au)  
Tours are available 5 days a week.



The Wandin & District Historical Museum Society operates Mont De Lancey Historical Home and Museum at Wandin North. Mont De Lancey is part of the 80 acre allotment selected by stonemason Henry Sebire and wife Martha in 1867, when the Parish of Wandin Yallock was first settled. Fruit growing was the main agricultural industry of the area. The museum opened in March 1993 and is based around the Sebire home, a fully restored and furnished 1880s brick building, with a slab kitchen and a small domestic dairy.

## 2 Intersection of Hunter, Beenak and Quayle Roads Wandin Yallock

This intersection has three key sites:

- (a) The original brick Methodist Church built in 1881 (now Uniting Church).
- (b) Jubilee Gates at Wandin Yallock Primary School, dedicated in 1930 to mark the school's Diamond Jubilee. The original 1870 school building is incorporated in the school rebuild.
- (c) Soldiers' Monument, dedicated 4 June 1921, with W/WII panels unveiled 18 April 1948. Red flowering gums down Beenak Road and along the Warburton Highway are survivors of the Honour Row planted in 1918.



### 3 Wanderslore Sanctuary

📍 *Launching Place* 💰 *Free* ☎ *5967 2698*  
🕒 *By appointment*

Wanderslore is a 10 ha bushland remnant gifted to the Victorian Conservation Trust (now Trust For Nature) as a sanctuary reserve for the preservation of wildlife and native plants. Artist, poet and teacher Constance Coleman inherited a fishing shack on a small block of land before WWII, and devoted her income to acquiring adjoining bush blocks to create Wanderslore. She painted in watercolour and oils in a studio which had been a Victorian Railways fettler's hut, and later the office of the Launching Place Railway Station.



### 4 Upper Yarra Museum

📍 *2415 Warburton Hwy Yarra Junction*  
💰 *Family: \$10 / Adult: \$5 / Concession: \$3*  
*Child (4-15): \$1.*  
*Group bookings 10+ by appointment*  
☎ *5967 2167*  
🕒 *11am-4pm Sundays*  
🌐 *uyvhs.org.au*



The Upper Yarra Museum is housed in and around the former Yarra Junction Railway Station (c.1888). The rail line between Lilydale and Warburton was opened in 1901 and the station building was relocated from Lilydale to Yarra Junction in 1913. After the last train completed the journey in 1965, the Upper Yarra Valley Historical Society took over management of the then-derelict buildings. Local history themes such as rail, timber, agriculture, gold, domestic life, transport, and tourism are represented at the Museum in the form of structures, artefacts, documents, photos and digitised material.





## 5 Walhalla - Former Baker, Bootmaker and Jeweller Shop

📍 3397 Warburton Hwy Warburton

During Walhalla's heyday in the 1880-1890s, this building housed the flourishing businesses of Charles Collins the Baker, Samuel Phillips the Jeweller and William Bessell the Bootmaker. As Walhalla's gold mines began to close, William Bessell relocated the building to Warburton in 1913.

It continued as a boot shop (shoe shop) until the 1980s, it was then a museum and gallery for a time before becoming a vintage clothing shop.



## 7 Powelltown Union Church



📍 1650 Little Yarra Rd (Main Rd) Powelltown  
✉ [uyvhs.info@gmail.com](mailto:uyvhs.info@gmail.com)

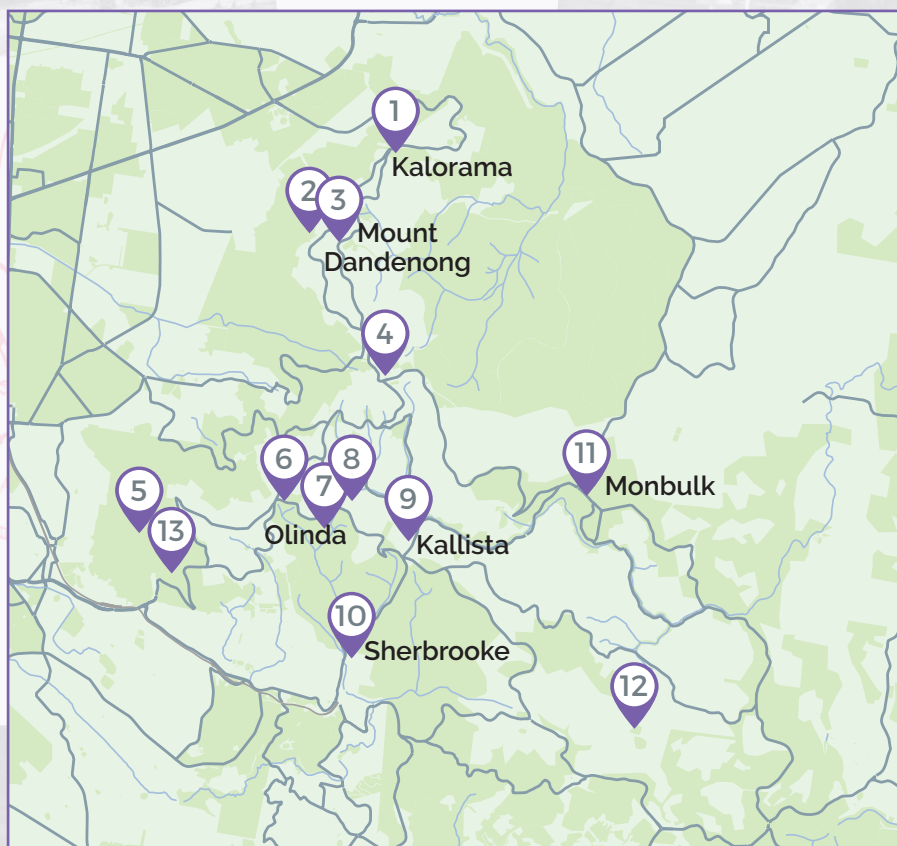
Built in 1927, the Powelltown Union Church is one of two remaining Union Churches in Victoria. The Powelltown Church was constructed by the community, using locally donated building materials. Many notable pioneering families were associated with its construction and patronage. Recent restorations have been necessary to prolong the life of this rare and beautiful church, which is available for hire.



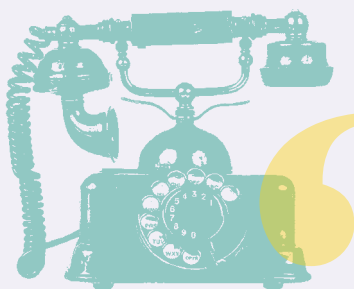
*The Narra Bangal Garibada Mahasabha was  
formed in the year following the sanction  
of the Narra Bangal Council.*



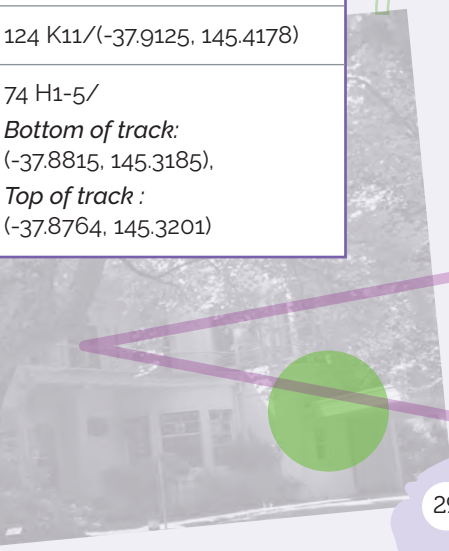
# Northern Dandenongs



*This map is not to scale. Please use Melway or GPS co-ordinates for accurate location.*



	Description	Melway/GPS co-ordinates
1	Five Ways, Kalorama	52 J9/(-37.8174, 145.3669)
2	Kyeema Crash Site	66 E1/(-37.8331, 145.3499)
3	William Ricketts Sanctuary	66 F1/(-37.8323, 145.3554)
4	Olinda Heritage Walk	66 H7/(-37.8556, 145.3650)
5	One Tree Hill (Memorial Cairns)	75 C1/(-37.8755, 145.3428)
6	Ferny Creek Monument Corner	74 H1/(-37.8724, 145.3194)
7	Alfred Nicholas Memorial Garden	75 G1/(-37.8727, 145.3603)
8	Burnham Beeches	75 F1/(-37.8762, 145.3535)
9	Kallista Tea Rooms	75 K3/(-37.8823, 145.3711)
10	Sherbrooke Art Society	75 F8/(-37.9017, 145.3572)
11	Monbulk Main Street	124 H1/(-37.8741, 145.4068)
12	Johns Hill Reserve	124 K11/(-37.9125, 145.4178)
13	Kokoda Track Memorial Walk	74 H1-5/ <i>Bottom of track:</i> (-37.8815, 145.3185), <i>Top of track :</i> (-37.8764, 145.3201)



# Northern Dandenongs

## 1 Five Ways, Kalorama

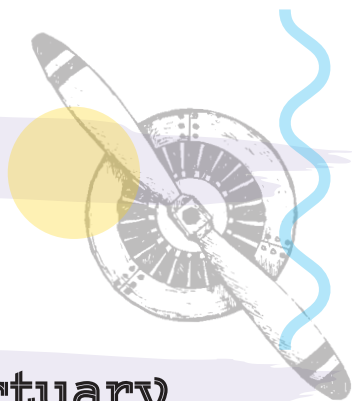
📍 *Intersection Mt Dandenong Tourist Rd, Barbers Rd, Ridge Rd, Old Coach Rd.*

The scenic lookout, the site of a former garage, looks out over Harmony Vale, an area settled in the 1860s by the Jeeves, Child and Richardson families. The twin elms in the centre traffic island mark the entrance to the Jeeves homestead; in the valley below, its remaining chimney has been incorporated into a pavilion with historic information panels (entrance from Barbers Road). The cafe was originally Beulah tearooms, the yoga centre a Methodist church and the gallery the post office/general store.



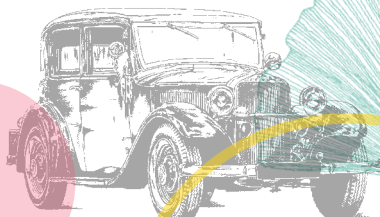
## 2 Kyeema Crash Site

📍 *Kyeema Memorial, off Osprey Rd, Mt Dandenong*



## 3 William Ricketts Sanctuary

📍 *1396 Mt Dandenong Tourist Rd, Mt Dandenong*





## 4 Olinda Heritage Walk

📍 Mangana, 29 Olinda-Monbulk Rd, Olinda

The Heritage Walk provides a lasting record of the beginnings and development of the Olinda Township. Thirteen pre-1915 sites, including the Olinda Mechanics Institute Hall, have been identified with plaques placed in close proximity to the original sites. Booklets outlining Olinda's history are available at Destiny Point Café, Five-Ways, or at Olinda stores such as Mangana.



## 6 Ferny Creek Monument Corner

📍 Southern corner of intersection of Mt Dandenong Tourist and Sherbrooke Roads

The Monument was erected in memory of those from the district who served in WWI. The memorial, a stone shelter with a memorial plaque, served as an index to the chestnut trees on Anzac Avenue and the men they commemorated. Unfortunately few of the memorial trees remain. The dedication and unveiling service of this memorial, erected by local returned servicemen, took place in May 1939.



## 7 Alfred Nicholas Memorial Garden

📍 Sherbrooke Rd, Sherbrooke 💰 Free 📞 131963 🕒 10am-5pm daily  
🔗 [parks.vic.gov.au/places-to-see/sites/alfred-nicholas-memorial-garden](https://parks.vic.gov.au/places-to-see/sites/alfred-nicholas-memorial-garden)

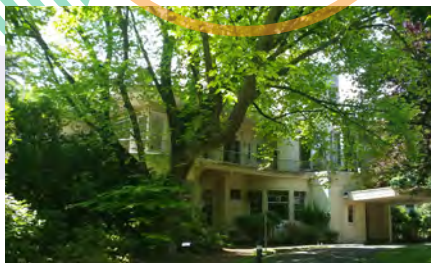
Formerly part of the adjacent Burnham Beeches Estate, the approximately 13 ha gardens are now in the care of Parks Victoria. Serene walkways wind amongst a spectacular array of plant species including azaleas, rhododendrons, beech trees, ginkgo trees and the majestic mountain ash. Landscaped in the 1930s, the gardens are enhanced with rockeries and retaining walls, ponds, bridges and waterfalls, the main water feature being the distinctive ornamental lake with boathouse.

## 8 Burnham Beeches

📍 1 Sherbrooke Rd, Sherbrooke 📞 9691 3888  
🌐 [burnhambeeches.com.au](http://burnhambeeches.com.au)

Burnham Beeches is an iconic Art Moderne mansion designed by Harry Norris for the wealthy Aspro king Alfred Nicholas. The estate contains extensive established gardens and a rolling rural landscape totalling 22.72 ha.

The original mansion was built in 1933 and has two newer buildings (1980s) adjoining it. It is not open to the public. Sitting vacant for the last 39 years, there now will be a holistic restoration of Burnham Beeches over a number of years.



## 9 Kallista Tea Rooms

📍 103 Monbulk Rd Kallista

Designed by Melbourne architect Frederick Romberg (1913-1992) and completed in 1950, the heritage-listed Tea Rooms is noted for its iconic curved window, which wraps around the northern end of the building, and modern style flat roof.



## 10 Sherbrooke Art Society

📍 62 Monbulk Rd Belgrave 📞 9754 4264  
🕒 Open daily (except Tuesday) 11am-4pm

Established in 1966, the Sherbrooke Art Society is located in the former 'Red Mill'. Amongst the Society's many arts-related activities is the highly regarded Annual Streeton-Roberts Competition Award.



## 11 Monbulk Main Street

Visit Monbulk's main street and follow a path through our history. A board located next to the pedestrian crossing shows where to find symbols embedded in the footpath, each telling a different story about Monbulk's past history.

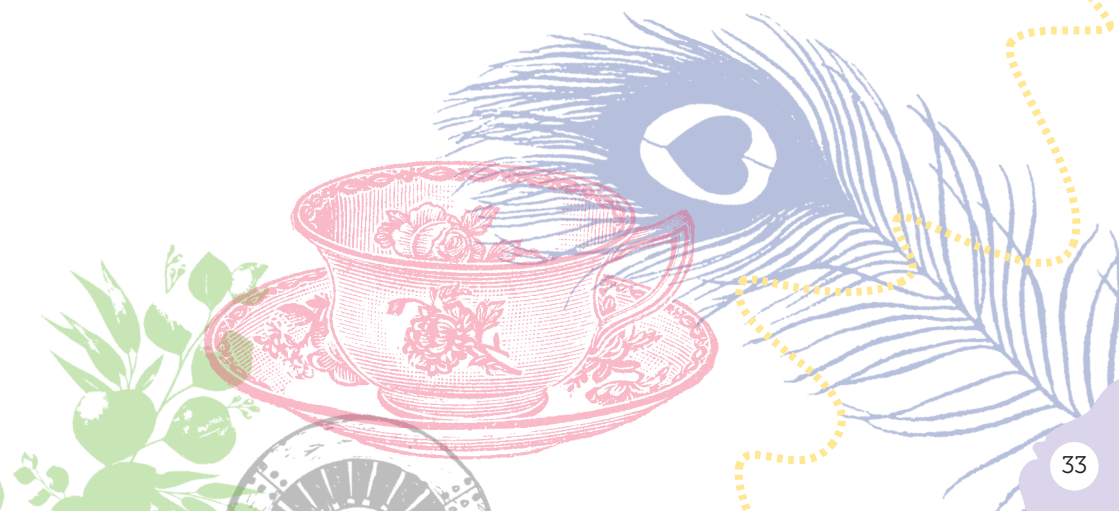


Monbulk was an important meeting and healing place for local Wurundjeri people before European settlers arrived. The township was first established in 1893 as the 'Dandenong Forest Village Settlement' where timber, gold and farming drew settlers to the area. Booklets outlining Monbulk's history are available at Monbulk & District Community Bendigo Bank and Monbulk Living & Learning Centre.

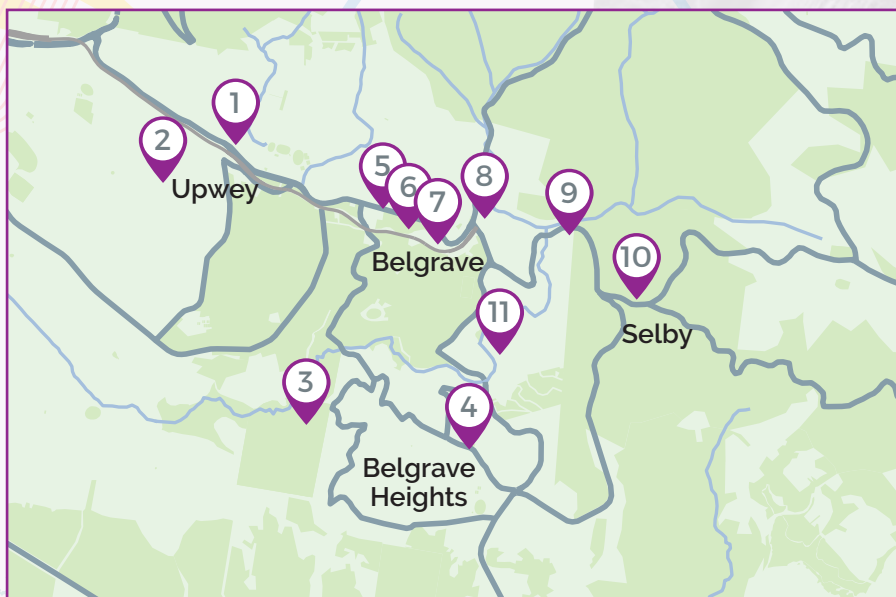
## 12 Johns Hill Reserve

 Ridge Rd, Kallista

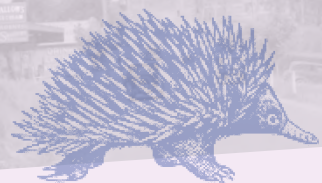
Johns Hill Reserve is named after a Welsh settler, John Johns, who purchased land on the ridge above Menzies Creek in 1878. The Reserve has almost all-round views over the Yarra Valley and the Silvan and Cardinia Reservoirs. There is interpretive signage at the site.



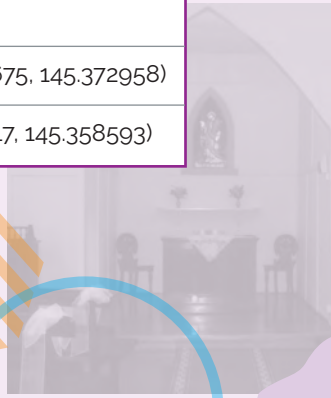
# Southern Dandenongs



*This map is not to scale. Please use Melway or GPS co-ordinates for accurate location.*



	Description	Melway/GPS co-ordinates
1	Running Rabbits Military Museum (Upwey-Belgrave RSL)	75 A8/(-37.9020,145.3283)
2	Lookout Tower, Belmont Avenue Reserve	74 J9/(-37.9047,145.3227)
3	Birdsland Reserve	84 C2/(-37.925202, 145.334213)
4	Former St Martin's Anglican Church and Hall	84 F3/(-37.9269,145.3530)
5	Belgrave World War 1 Memorial	75 E10/(-37.907625, 145.349542)
6	Cameo Cinemas	75 E10/(-37.9108,145.3499)
7	Earthly Pleasures Cafe	75 E10/(-37.9117,145.3546)
8	Puffing Billy Tourist Railway	75 F 10/(-37.907565, 145.356940)
9	Puffing Billy Railway Trestle Bridge	75 J12/(-37.908314, 145.365101)
10	Main St, Selby	75 K 12/(-37.914675, 145.372958)
11	Belgrave Lake Park	75 F12/(-37.917217, 145.358593)





# Southern Dandenongs

## 1 Running Rabbits Military Museum

📍 1 Mast Gully Rd, Upwey 🏷️ Gold coin donation 📞 9754 3665  
🕒 Thursdays 10am–2pm; Sundays 10am–3pm or by appointment  
🌐 [upweybelgraversl.org.au](http://upweybelgraversl.org.au)

This museum is dedicated to the heroism of the 'running rabbits' of the Australian Militia and AIF who fought a gallant fighting withdrawal against overwhelming odds along the Kokoda Track in New Guinea in 1942. The museum houses a large array of weapons, uniforms and other memorabilia ranging from trench art to a Leopard tank.

## 2 Lookout Tower, Belmont Avenue Reserve

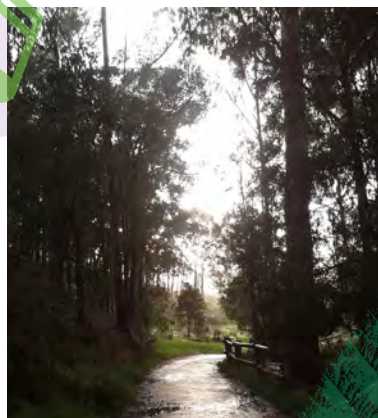
📍 32B Belmont Ave, Upwey

The Belmont Road Tower is the last fire lookout tower in the Dandenongs. There are restricted views to the South West, and interpretive signage at the site.



## 3 Birdsland

Birdsland is a 75ha community bushland reserve. Home to the Wurundjeri and Bunurrong people, the land was cleared for grazing and crop production around 150 years ago. The Birds family grazed sheep there from about 1940. In 1981, to save the site from urban development, the Shire of Sherbrooke purchased Birdsland. It opened to the public in 1984.



## 4 Former St Martins Anglican Church and Hall

📍 127 Colby Dr, Belgrave Heights

This 1920s church, formerly St Martin's Anglican Church, is available for hire. The church hall is now the centre for Southern Sherbrooke Historical Society's work and collection.



## 5 Belgrave World War I Memorial

📍 Cnr Burwood Hwy and Wattle Ave.

## 6 Cameo Cinemas

📍 1628 Burwood Hwy, Belgrave 📞 9754 7844  
🌐 Check website 🌐 [cameocinemas.com.au](http://cameocinemas.com.au)



Opened in 1935 in the classic Art Deco style, the Cameo has had a National Trust classification since 1995. Although extensions have occurred over recent years, the original auditorium with a capacity of around 300 remains relatively intact architecturally, and provides an atmosphere of traditional style and glamour.

## 7 Earthly Pleasures Café



📍 1627 Burwood Hwy, Belgrave 📞 9752 6744  
🕒 Wednesdays to Sundays 8:30am-4pm  
🌐 [earthlypleasurescafe.com](http://earthlypleasurescafe.com)

The café is located in a National Trust listed stone-built house. It was formerly the home and medical surgery of Dr Olaf Jorgensen, who was a doctor in Belgrave from the 1930s. Look for the large round bronze plaque on the front gatepost.

## 8 Puffing Billy Tourist Railway

📍 1 Old Monbulk Rd, Belgrave 📞 9757 0700 🕒 10am-5pm daily  
🌐 [puffingbilly.com.au](http://puffingbilly.com.au)

Visit the new Lakeside Visitor Centre at Emerald Lake Park and Railway Café.

## 9 The Puffing Billy Railway Trestle Bridge, Selby

📍 Belgrave-Gembrooke Road (near Nation Road Selby)

## 10 The Main Road, Selby

Apart from the cars, the main street of Selby still looks similar to this photo from the 1940s. The stone All Saints (Carlotta Tye Memorial) Church from 1938 still overlooks the scene, giving it an English rural atmosphere. During the 1939 Black Friday bushfires, women and children sheltered in the church.



## 11 Falls at the Reservoir, Belgrave Lake Park

📍 35 Park Dr, Belgrave 🕒 24 hours

Belgrave Lake Park surrounds a disused reservoir and pipeline which, from 1893-1924, supplied water to Dandenong, and later to the farmers of Lysterfield. The park was a popular tourist destination for picnicking, swimming and camping. The original kiosk and a stone and log cabin remain.



The Belgrave Reservoir  
formed in the  
of the Belgrave

# Yarra Ranges Heritage Groups

## Healesville & District Historical Society Inc

- 📍 Healesville Community Link, 110 River St, Healesville
- 📞 5962 1655 ✉ [hhsociety@optusnet.com.au](mailto:hhsociety@optusnet.com.au)
- 🕒 1.30-4pm Mondays and Fridays  
*Other days by agreement arranged through the Committee of Management.*
- 🌐 [healesvillehistorical.websyte.com.au](http://healesvillehistorical.websyte.com.au)

Healesville and District Historical Society Inc. is a volunteer-based local history resource centre, open since 1984. Our purpose is to encourage and facilitate the study of the history of Healesville and District. The Society aims to acquire, research, conserve, interpret and exhibit material that illustrates this history.

## Lilydale & District Historical Society Inc

- 📍 Old Lilydale Court House, 61 Castella St, Lilydale
- 📞 9739 7407 or President Sue Thompson - 0475 219 884
- ✉ [info@lilydalehistorical.com.au](mailto:info@lilydalehistorical.com.au)
- 🕒 *By appointment only 11am-4pm Saturdays to Mondays*  
*Sundays are preferred. 1pm-4pm Friday*
- 🌐 [lilydalehistorical.com.au](http://lilydalehistorical.com.au) & [www.nelliemelbamuseum.com.au](http://www.nelliemelbamuseum.com.au)

Lilydale & District Historical Society Inc. was formed in 1971 to help plan and mount displays for the Shire of Lilydale's Centenary in February 1972. The society is located at the Old Lilydale Court House, where we have archival files, an extensive photographic collection and library. Our collecting area is Lilydale, Coldstream, Chirnside Park, Montrose, Seville, Silvan, Yering, and Killara, with a special focus on the life and family of Dame Nellie Melba.

## Monbulk Historical Society Inc

- 📍 Monbulk Living & Learning Centre (The Hub), 21 Main St, Monbulk VIC 3793.
- 🕒 *Wednesdays, 9.30am-12pm subject to volunteer availability excluding school holidays. Special visits can be arranged via email*
- ✉ [explore@monbulkhistoricalociety.org.au](mailto:explore@monbulkhistoricalociety.org.au) 🌐 [monbulkhistoricalociety.org.au](http://monbulkhistoricalociety.org.au)

Monbulk Historical Society started around 1982 with the goal of preserving the many documents and photographs donated by the families who pioneered the townships of Monbulk, The Patch, Kallista and Sherbrooke. The collection includes oral interviews and newspaper articles of local families and events. The Society has published a number of books on the history of the area and its people, and welcomes additional information.



## Mooroolbark History Group Inc

📞 *President - Marion Stott OAM 9726 8740*  
✉️ *mooroolbarkhistorygroup@gmail.com*

Mooroolbark History Group began in 2009 to help commemorate the 30th Anniversary of the Mooroolbark Community Centre, 21 years of the Red Earth Festival and 17 years of the Celebrate Mooroolbark Festival. We produced a book, *Celebrating Mooroolbark*. Our involvement in the design of the War Memorial at Hookey Park led to us assuming a custodial role. We offer 'Walk & Talks' around Mooroolbark.

---

## Mount Dandenong & District Historical Society Inc

📍 *Farndons Community Hall, 42 Falls Rd, Mount Dandenong*  
📞 *9728 1437* ✉️ *mtddhs@gmail.com* 🕒 *Open by appointment*  
🌐 *victoriancollections.net.au/organisations/mt-dandenong*

Mt Dandenong & District Historical Society Inc. is staffed by volunteer community members, whose aim is to collect, research, preserve and share the history of the townships across the ridge of the Dandenong Ranges. Our focus is on photographs, written and oral records and objects representing the history of Mt Dandenong, Kalorama, Olinda, Sassafra, Ferny Creek and Tremont.

---

## Mount Evelyn History Group Inc

📍 *Mount Evelyn History Group Inc., PO Box 289, Mt Evelyn, 3796, Australia.*  
📞 *9736 2935* ✉️ *mtevelynhistorygroup@gmail.com*  
🌐 *mt-evelyn.net/historygroup*

Mount Evelyn History Group incorporated in 2008. Our publications include *Tracks to Trails: a History of Mt Evelyn*, and *Aborigines in the Yarra Valley & Northern Dandenongs*. Meetings are held at Hardy House, 49 Birmingham Rd, Mount Evelyn. Contact us to confirm details.

## National Trust Dandenong Ranges Branch

📍 C/- PO Box 146, Kallista 3791 📞 President Carolyn Ebdon - 0407 505573  
✉️ carebdon@gmail.com

The Dandenong Ranges Branch of the National Trust offers activities and outings for local members. We work with National Trust State Office staff to guide local Councils in the protection of heritage places and landscapes in and around the Dandenong Ranges. The Branch joins with other local groups in the protection and promotion of local heritage and history.

## Save the Dandenongs League Inc

📍 PO Box 146, Kallista, 3791 🌐 sdl.org.au  
📞 President Betty Marsden OAM can be contacted via sdl.org.au

Save the Dandenongs League was formed in October 1950, following a public meeting called by Miss May Moon, to work for the protection, preservation and orderly development of the Ranges in the interest of residents and visitors. The League has initiated and supported many actions to protect the Dandenongs, resulting in the retention of many reserves and heritage sites listed here.

## Sherbrooke Foothills Historical Society Inc

📍 PO Box 1160, Upwey 3158 ✉️ sherbrooke.foothills.h.s@gmail.com  
🌐 historicalsociety.org.au 📺 Refer Facebook SherbrookeFoothills for hours of opening and messaging

The Sherbrooke Foothills Historical Society was formed in 1992 and covers the history of Belgrave, Upwey, Tecoma and Upper Ferntree Gully. We publish *Reflections Of The Past*, Volumes 1 to 4. We maintain an archive of more than 7000 historical photographs covering our area of interest.

## Southern Sherbrooke Historical Society Inc

📍 127 Colby Drive, Belgrave Heights ✉️ sthnsherbrookehs@yahoo.com.au  
🕒 Mondays 2:30-5:30 (please call to confirm) 📞 59683762  
🌐 southernsherbrooke.wordpress.com

Southern Sherbrooke Historical Society began in 1992. We gather and share the history of Belgrave, Belgrave Heights, Belgrave South, Selby, Menzies Creek, Lysterfield and Narre Warren East. Our collection includes photos, reference library, rate books, historical artefacts, and records of local organisations. We manage two relocated historical buildings which were restored under our stewardship.

## Upper Yarra Valley Historical Society Inc

- 📍 2415 Warburton Hwy. Yarra Junction 📞 5967 2167  
✉ [uyvhs.info@gmail.com](mailto:uyvhs.info@gmail.com) 🕒 *Sundays 11am-4pm, special openings for groups on other days are possible by special arrangement*  
🌐 [uyvhs.org.au](http://uyvhs.org.au)

The former Yarra Junction Railway Station (1888) is managed by the Upper Yarra Valley Historical Society (UYVHS), which covers the history of the area west to Woori Yallock, East to Warburton and Reefton, south to Powelltown and north to Don Valley.

## Wandin & District Historical Museum Society Inc

- 📍 71 Wellington Rd, Wandin North 3139 📞 5964 2088  
✉ [info@montdelancey.org.au](mailto:info@montdelancey.org.au) 🕒 *Weds to Sunday 10am – 4.30pm*  
🌐 [montdelancey.org.au](http://montdelancey.org.au)

The Society is based at and operates Mont De Lancey Historical Home and Museum at Wandin North.

## Yarra Glen & District Living & Learning Centre History Group

- 📍 *Yarra Glen & District Living & Learning Centre, 12-14 Anzac Avenue, Yarra Glen*  
📞 9730 2887 / 0429 006 152 ✉ [yarraglenhistorical@live.com.au](mailto:yarraglenhistorical@live.com.au)  
🕒 *Weekly meetings 2-4pm Tuesdays during school terms*  
🌐 [yarraglenhistory.com.au](http://yarraglenhistory.com.au)

Yarra Glen & District Living & Learning Centre History Group researches, collects and promotes the history of Yarra Glen, Dixons Creek, Steels Creek, Tarrawarra and Christmas Hills.

## Yarra Valley Italian Cultural Group Inc

- 🌐 [yvicg.com.au](http://yvicg.com.au)

The Yarra Valley Italian Cultural Group formed to support and celebrate the Italian community. The group has published calendars and books, and organises the annual Benvenuti Festival.

Proudly printed  
in the Yarra Ranges by  
Signs Publishing on  
100% recycled paper.

# Yarra Ranges *Heritage* NETWORK

