

PRECINCT C: LILYDALE

Description

Lilydale is a key residential precinct with substantial rural, industrial and commercial areas.

The precinct includes the regional social recreation park 'Lillydale Lake' and a regional off-road trail, the Lilydale-Warburton Rail Trail, which provides excellent opportunities for local enterprises as well as having regional significance and a strong tourism focus.

The regional open spaces enable sporting activities – at Lilydale Recreation Reserve and Gateway Reserve, and at other local and district social recreation parks. Melba Park provides excellent diversity of play spaces, event spaces and open spaces for unstructured activities, picnicking and relaxation.

What population changes will affect the need for open space and recreation facilities?

The residential population of Lilydale is 15 719 people, based on the 2011 Census data.

Lilydale has a similar proportion of people in the younger age groups (0 to 17) but a smaller proportion of people in the older age groups (60+), when compared to Yarra Ranges Shire as a whole. This is now changing, with increases in age groups being recorded in the older age cohorts and decreases for younger age cohorts. For example, in 2006 an additional 543 people were aged between 50 and 69 year.

There is however an increasing number of young people between 12 to 24 years (an additional 243 persons since 2001). These figures suggest a movement from young families to families with young adults.

The Lilydale precinct supports families and is experiencing an ageing population. Council expects a continuing demand for mainstream participation sports, a diversity of open spaces including social recreation parks, and accessible recreation opportunities.

What future housing developments are planned?

There is continued demand for residential development within Yarra Ranges, catering both for people moving from Melbourne and for new households being formed from within the existing Yarra Ranges community.

Lilydale is a key activity centre supporting industrial, retail and residential areas. It is considered as offering the best capability for additional housing.

Lilydale is a growing residential area with a population projected to increase from 15 719 to 20 809 in 2031 (Yarra Ranges Community Profile 2011). The population grew substantially during the 1990s and continued to grow between 2001 and 2006, although at a slower rate, as a result of new dwellings being added to the area.

An Urban Design Framework was prepared for Lilydale Town Centre. The key issues identified were that there was no civic space and a lack of a developed 'centre'. The Recreation and Open Space Strategy supports the principles in the Urban Design Framework for the provision of local open space that include active and treed streetscapes.

What open space do we have?

There is more than 157ha of open space in the Lilydale precinct. Council manages most of the open space in the precinct.

Key sports reserves and facilities

Lilydale Recreation Reserve has two playing fields and other open space areas. It connects with the Lilydale Outdoor Pool and showground.

Gateway Reserve provides a local sports field. There are picnic facilities at the reserve.

The Lilydale tennis courts, bowling greens, model car track and skate park are located on the same site. The skate park was recently extended and is now a regional-level skate park.

Lilydale Outdoor Pool is an old 50-metre outdoor pool located between Melba Park and the Lilydale Recreation Reserve.

Lilydale Basketball Stadium is located at the Lilydale Secondary School.

The Lilydale BMX Track is located along the Lilydale to Warburton Rail Trail Reserve. The track requires an upgrade.

Lilydale Primary School, Lilydale Secondary School and Mt Lilydale Mercy College also provide sports facilities and open space in the form of indoor sports stadiums and sports ovals and courts.

Social recreation parks

Lillydale Lake Parklands provides a number of trails, opens space areas and an Access for All Abilities regional playground.

Melba Park is a district social recreation park with a large playground, picnic areas and open spaces. A master plan is being implemented at the park to rejuvenate the experiences.

Local social recreation parks with play space opportunities are dispersed across Lilydale. These include Old Pound Reserve, Poyner Reserve, Kidgell Street Reserve.

Trails

Lilydale to Warburton Rail Trail provides a continuous shared use trail which stretches 39km in length from Lilydale Station to the Warburton Township. The Rail Trail is located along the old railway reserve connecting local townships from Lilydale to Warburton. The Trail offers tourism, community and recreation benefits.

Several off-road pedestrian and cycling links are provided throughout Lilydale including the Olinda Creek Trail and Lilydale to Warburton Rail Trail. These trails connect residential areas with major open spaces including the Lillydale Lake Park, Lilydale Recreation Reserve and Melba Park.

The Footpath Strategy has seen several footpaths established in Lilydale. This includes a trail along Anderson Street that links the aged care services and Lilydale Lake with Council services and the main street.

Flora and fauna conservation reserves

The Olinda Wetlands, along Swansea Road, are connected to Lillydale Lake by Olinda Creek and the recently constructed Olinda Creek Trail.

Is our existing open space sufficient?

Lilydale Reserve and Gateway Reserve provide for the sport function in the precinct while Lillydale Lake and Melba Park provide for the social recreation function.

The Lilydale to Warburton Rail Trail and Olinda Creek Trail provide major off-road trails linking residential areas to open spaces. These primary trails are linked to an extensive footpath system.

There is an adequate level of open space in Lilydale areas for the current population. Open space is presented as a range of sporting reserves, outdoor courts and community parks offering social recreation and relaxation opportunities and retarding basins.

The strategy identifies the need to improve the distribution of open space in Lilydale to ensure good walking access to quality local parks offering social/ recreation and relaxation opportunities to the community. The strategy also identifies the need to improve quality open space in Lilydale.

The Lilydale Quarry occupies almost half of the total size of Lilydale. A master plan exploring the future of the site is currently underway.

The site is likely to attract a mix development of various land uses and the end of quarrying is an opportunity for Council's land use planning objectives to be achieved in Lilydale. Due to the increase in population there is likely to be a demand for an additional regional sports facilities and off-road trails.

Issues

While diverse kinds of open space are good, in some pockets of the precinct there is limited open space within easy walking distance (e.g. 400m to 500m). As developer applications are considered for increased residential density, consideration of further acquisition of local social recreation parks will be important. Also, an investigation into whether there is an oversupply of open space in the precinct should be undertaken.

The quality of existing open space in the Lilydale precinct needs to be improved to provide diverse recreation opportunities. Different experiences should be provided at local social recreation parks.

Maroondah Highway, a major arterial road, is considered a barrier to accessing open space north or south of the highway. Connections across the highway and throughout residential area to open space are therefore important. These can be achieved with off-road trails and road crossings.

Operational and technical reviews of the Kilsyth Centenary Pool and Lilydale Outdoor Pool indicate that the facilities are ageing and are in need of significant capital to meet current and future community needs and expectations. The facilities provide aquatic areas only and do not provide the necessary mix of wet and dry leisure opportunities that people now expect from leisure centres.

There is a missing link within the primary off-road trail network between Lilydale and Mooroolbark. The Hike and Bike Strategy supports the development of an off-road trail from Lilydale Station to Mooroolbark Station.

Opportunities

A number of master plans have been prepared for major sports reserves and facilities and social recreation parks in the precinct.

There is an opportunity to realise these plans through allocation of open space contributions in priority projects and by seeking funding grants.

The Quarry site is considered a rare opportunity for development of open space and recreation facilities to meet future demand. It also gives Council a chance to consider other land use planning objectives for Lilydale. A master plan is important for the planning process, and will shape development of this site.

A number of open space and recreation opportunities need to be considered as part of a master plan:

- Protecting the landscape values of the site.
- Supporting the development of a shared use trail through the site achieving the Hike and Bike Strategy direction to develop a trail from Lilydale Station to Mooroolbark.
- Considering developing a regional-sized sport facility in the Lilydale–Chirnside Park area to accommodate future need if housing population objectives are achieved.

A regional aquatic and leisure centre is also proposed in Lilydale with consideration of siting at the Quarry site that will offer a mix of aquatic, fitness and leisure activities. Advocating for the project with Places Victoria and funding from external funding agencies are important next steps. Development of a new aquatic centre will mean a review with the community on alternative uses for both Kilsyth Centenary Pool and Lilydale Outdoor Pool.

A major off-road trail connecting Lilydale to Mooroolbark will link to Lilydale to Warburton Rail Trail to the east of the urban district, Brushy Creek trail to the west, and the Mt Evelyn Aqueduct to the south. If achieved, the off-road trail network will link all major residential areas in the urban district including Lilydale, Chirnside Park, Mooroolbark, Kilsyth and Mt Evelyn.

Partnerships with local sports clubs and schools may be available to manage the use of existing sports facilities and promote the connection of young people to local sport and recreation opportunities.

PRECINCT C - ACTIONS

Council is acting to realise its planned development projects for the precinct in the following ways.

Implementing the Aquatic Facilities Strategic Review and Yarra Ranges Regional Aquatic and Leisure Centre Business Case

- Proposed Yarra Ranges Regional Aquatic and Leisure Centre: advocacy for development, funding and start construction.
- Lilydale Outdoor Pool and Kilsyth Centenary Pool: consideration of future of both, once the Yarra Ranges Regional Aquatic and Leisure Centre has been developed and opened.

Implementing the Hike and Bike Strategy

- Lilydale Station and Mooroolbark Station: link via the off-road shared trail network.
- Walking paths and bicycle lanes: development.
- Road shoulders: sealing.
- Lilydale to Warburton Rail Trail: improvement of visitor nodes and signage in response to the Signage Audit and Management Plan.

Developing the facilities at Gateway Reserve

- Pavilion: proposal in partnership with tenants of the Gateway Reserve for upgrade.
- Explore expansions and upgrade of oval.

Implementing the Melba Park Master Plan

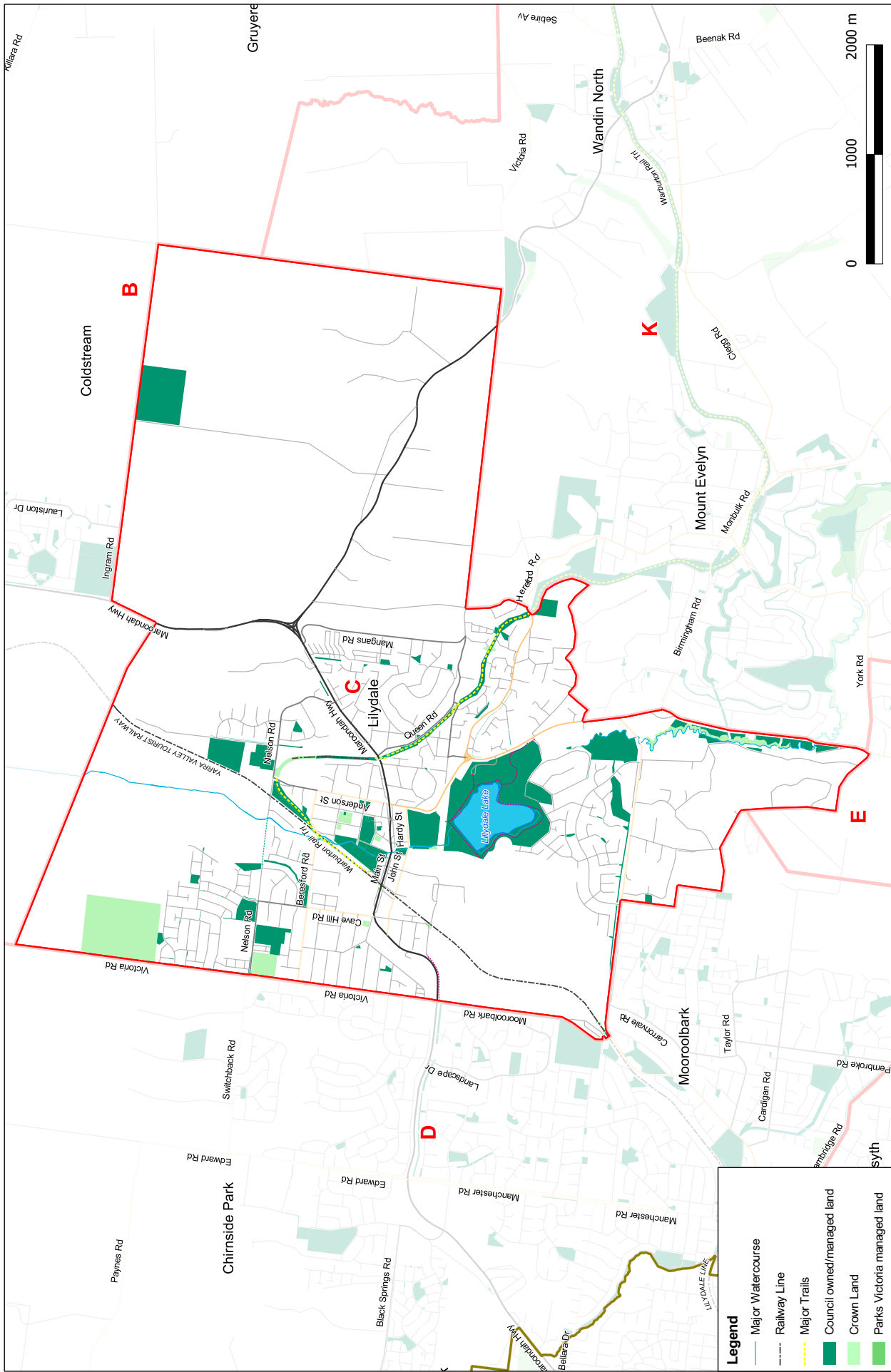
- Improve circulation paths within the park, upgrade park lighting, reshape the existing creek system, remove buffer vegetation and regrade mounds and amenities including seating and bins. Works will complement recent playground and car park upgrade.

Planning for future development

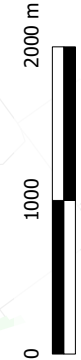
- Lilydale Quarry site: open space assessment to inform a future master plan for site development. A regional sports complex will be recommended with a mix of playing fields and indoor/outdoor courts. A regional aquatic centre will also be recommended.
- Lilydale and Chirnside Park: advocacy for a significant open space allocation to serve the sport needs of the projected population.
- Generally, Council will improve the quality and diversity of recreation opportunities at local social recreation parks; explore acquisition of land for local social recreation parks in areas underserved and investigate options for surplus open space in areas oversupplied; and explore partnerships with schools to joint use school sports reserves and facilities.

Other planned actions

- Social recreation places: improvement of quality and diversity of recreation opportunities.
- Social recreation parks: exploration of acquisition of land in local areas underserved, and investigating options for surplus open space in areas oversupplied.
- Schools: exploration of possible partnerships for joint use of school sports reserves and facilities.



Map scale: 1:30000 @ A3
 Map last updated: 12-08-2013
 Datum: GDA94 MGA Zone 55
 Job reference: HD101781



RECREATION OPEN SPACE STRATEGY PRECINCT C

Legend

- Major Watercourse
- Railway Line
- Major Trails
- Council owned/managed land
- Crown Land
- Parks Victoria managed land
- Lake/Reservoir
- Precinct Boundary
- Yarra Ranges LGA Boundary

RECREATION OPEN SPACE STRATEGY



Precinct C Recommendations
Lilydale

Recommendations

1. Advocate for redevelopment of Yarra Ranges Aquatic and Leisure Centre.
2. Consider the future of Lilydale outdoor pool.
3. Link Lilydale and Mooroolbark Stations with pedestrian/bicycle trail.
4. Develop facilities at Gateway Reserve and explore oval expansion.
5. Implement Melba Park master plan.
6. Conduct open space assessment as part of future master plan for Lilydale Quarry site. Assessment to support a regional sports precinct and Yarra Ranges Aquatic and Leisure Centre.
7. Improve visitor nodes and signage along Lilydale to Warburton Rail Trail.
8. Improve the quality and diversity of recreation opportunities at neighbourhood parks.
9. Explore relationships with schools to use school sports reserves and facilities.
10. Explore acquisition of land for local open space in areas with undersupply and options for surplus open space in areas oversupplied.

Key



Proposed trail



Area under-served by public open space