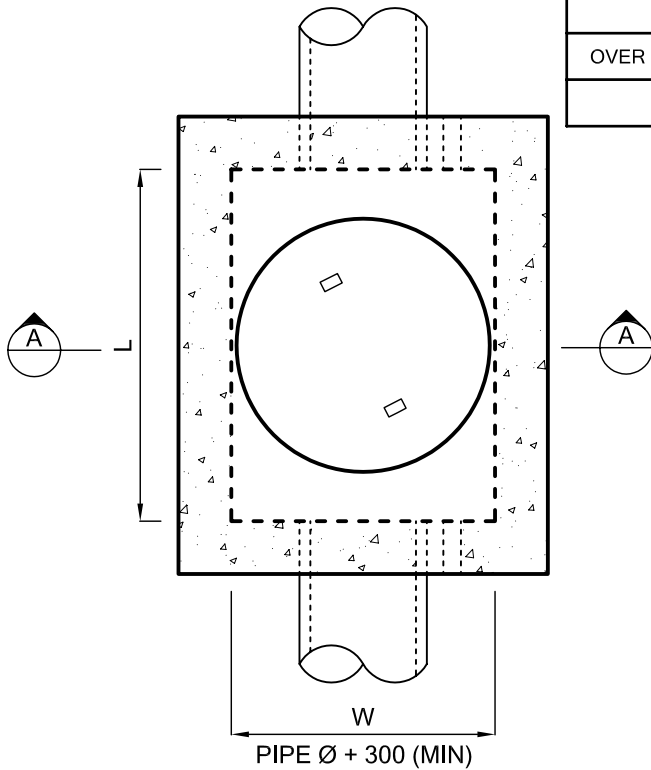
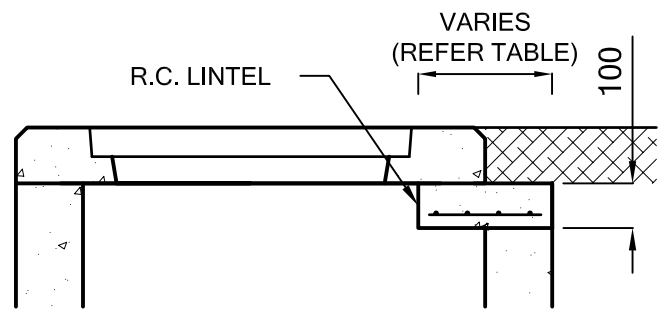


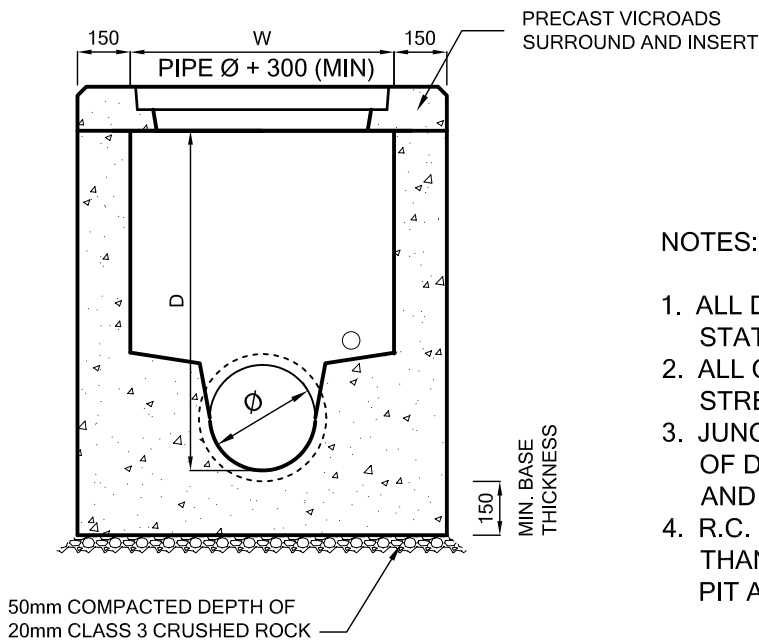
PIT DEPTH (D)	INTERNAL DIMENSIONS		COVER SIZE REQUIRED	R.C. LINTEL	MAX PIPE Ø
	L	W			
UP TO 1.0m	1000	600	VICROADS 1300 x 900	N/A	300
1.0m TO 1.5m	1000	750	VICROADS 1300 X 900 & R.C. LINTEL (REFER TO DETAIL)	1350 x 300	450
1.5m TO 2.5m	1000	900	VICROADS 1300 x 900 & R.C. LINTEL (REFER TO DETAIL)	1350 x 450	600
OVER 2.5m	SPECIFIC DESIGN REQUIRED				
* STEP IRONS REQUIRED FOR PITS DEEPER THAN 1.0m					



PLAN



DETAIL (R.C. LINTEL)



SECTION A-A

NOTES:

1. ALL DIMENSIONS ARE IN MILLIMETRES UNLESS STATED OTHERWISE
2. ALL CONCRETE SHALL BE 25MPa MINIMUM STRENGTH
3. JUNCTION PIT TO BE USED AT ALL CHANGES OF DIRECTION, DIFFERENCES IN PIPE SIZES AND GRADES
4. R.C. LINTEL REQUIRED FOR PITS GREATER THAN 750 WIDE (REFER DETAIL). CORBELLED PIT ALSO ACCEPTED

AMENDMENTS	DATE
LINTEL	4/10/99
UPDATED NOTES & DETAILS	1/07



JUNCTION PIT

MANAGER CIVIL DEVELOPMENT SERVICES

Handwritten signature

DRAWN BY:	WDA
DATE:	JAN '07
SCALE:	N.T.S.
DRAWING NO.:	SD / P4