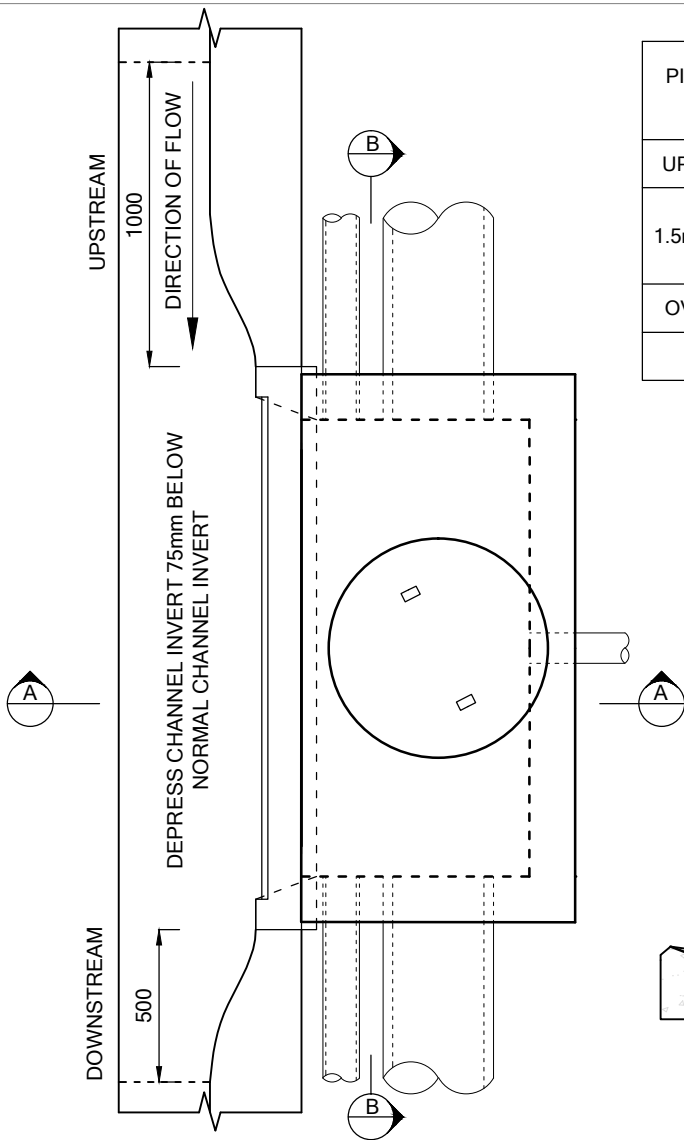


PIT DEPTH (D)	INTERNAL DIMENSIONS		COVER SIZE REQUIRED	MAX PIPE Ø
	L	W		
UP TO 1.5m	1500	750	VICROADS 1800 x 900	450
1.5m TO 2.5m	1500	900	VICROADS 1800 x 900, CORBELLED PIT (REFER TO DETAIL)	600
OVER 2.5m	SPECIFIC DESIGN REQUIRED			
* STEP IRONS REQUIRED FOR PITS DEEPER THAN 1.0m				

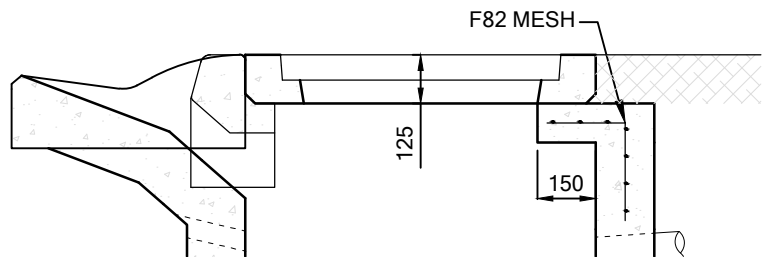
NOTES:

1. ALL DIMENSIONS ARE IN MILLIMETRES UNLESS STATED OTHERWISE.
2. ALL CONCRETE SHALL BE 25MPa MINIMUM STRENGTH
3. PROVIDE Ø50 WEEP HOLE IN PIT WALL BELOW KERB TO DRAIN PAVEMENT BOXING DURING CONSTRUCTION
4. R.C. LINTEL OR CORBELLED PIT REQUIRED FOR 900 WIDE PIT (REFER TO DETAIL)

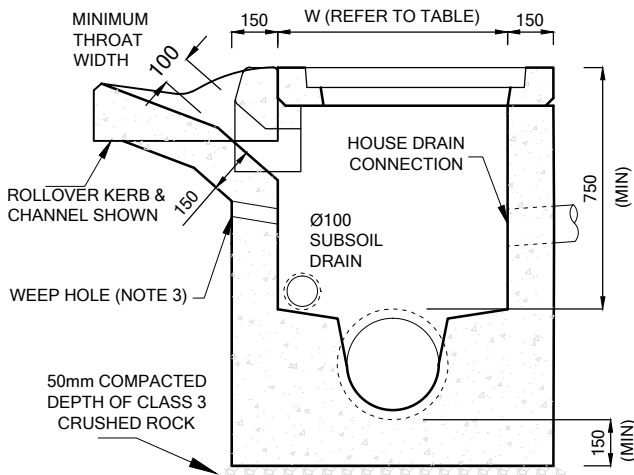
* TO BE USED WHERE LONGITUDINAL GRADE IS GREATER THAN 1 IN 8 AND / OR LOW POINTS AS REQUIRED
REFER TO SD / P1 WHERE LONGITUDINAL GRADE IS LESS THAN 1 IN 8



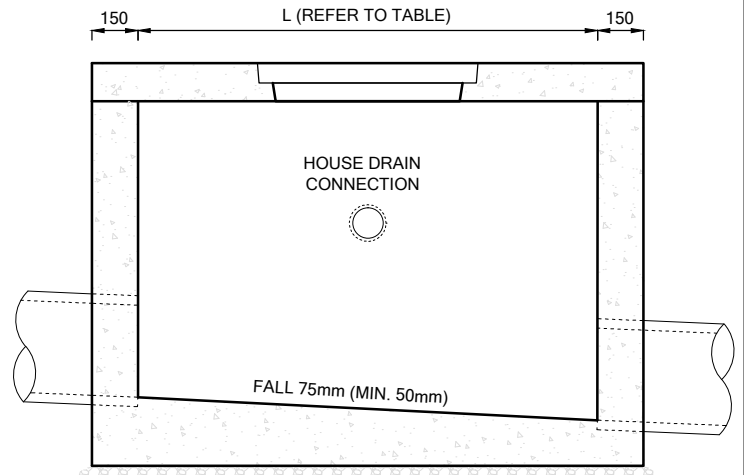
PLAN



DETAIL (CORBELLED PIT)



SECTION A-A



SECTION B-B

AMENDMENTS	DATE
ORIGINAL	8/97
SUBSOIL DRAIN & PIT COVER	2/12/98
LINTEL	4/10/99
UPDATED NOTES & DETAILS	1/07
LINTEL / CORBELLED DIMENSIONS	05/14



**SIDE ENTRY PIT
(1.5m CLEAR OPENING)**

MANAGER CIVIL DEVELOPMENT SERVICES

Handwritten signature

DRAWN BY:	AC
DATE:	JAN '07
SCALE:	N.T.S.
DRAWING NO.:	SD / P2