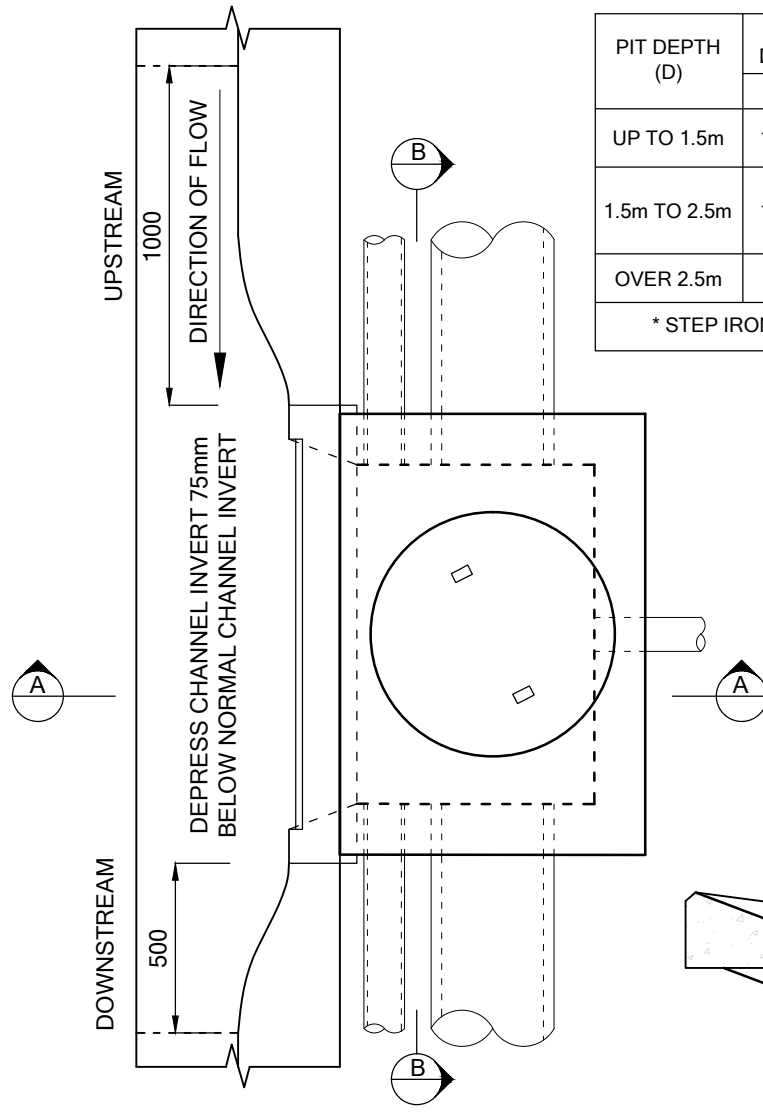


PIT DEPTH (D)	INTERNAL DIMENSIONS		COVER SIZE REQUIRED	R.C. LINTEL	MAX PIPE Ø
	L	W			
UP TO 1.5m	1000	750	VICROADS 1300 x 900	N/A	450
1.5m TO 2.5m	1000	900	VICROADS 1300 x 900 & LINTEL (REFER TO DETAIL)	1300 x 300	600
OVER 2.5m	SPECIFIC DESIGN REQUIRED				

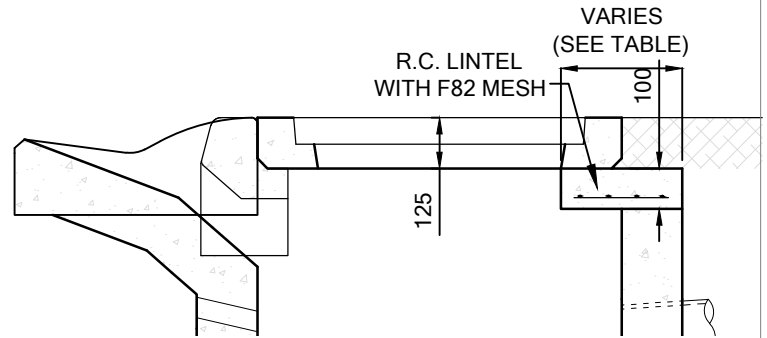
* STEP IRONS REQUIRED FOR PITS DEEPER THAN 1.0m (SEE SD / P8)



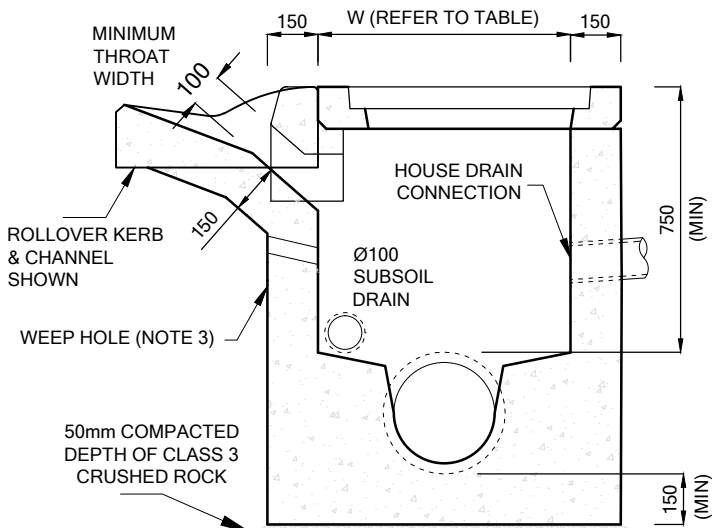
PLAN

- NOTES:
1. ALL DIMENSIONS ARE IN MILLIMETRES UNLESS STATED OTHERWISE.
 2. ALL CONCRETE SHALL BE 25MPa MINIMUM STRENGTH
 3. PROVIDE Ø50 WEEP HOLE IN PIT WALL BELOW KERB TO DRAIN PAVEMENT BOXING DURING CONSTRUCTION
 4. R.C. LINTEL REQUIRED FOR 900 WIDE PIT (REFER TO DETAIL). CORBELLED PIT ALSO ACCEPTED.
 5. THE WIDTH OF KERB & CHANNEL MAY VARY

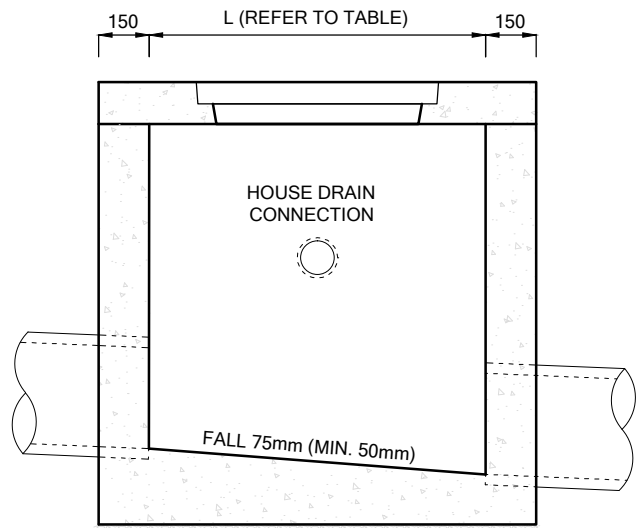
* REFER TO SD / P2 IF LONGITUDINAL GRADE IS GREATER THAN 1 IN 8



DETAIL (LINTEL)



SECTION A-A



SECTION B-B

AMENDMENTS	DATE
ORIGINAL	8/97
SUBSOIL DRAIN	2/12/98
NOTE 7	4/10/99
UPDATED NOTES & DETAILS	12/05
LINTEL / CORBELLED DIMENSIONS	05/14



**SIDE ENTRY PIT
(1m CLEAR OPENING)**

MANAGER CIVIL DEVELOPMENT SERVICES

M. J. Daniels

DRAWN BY:	WDA
DATE:	JAN '07
SCALE:	N.T.S.
DRAWING NO.:	SD / P1