

YARRA JUNCTION RECREATION RESERVE MASTER PLAN



THE VISION

The Yarra Junction Recreation Reserve will be a community and sports hub for the Yarra Junction community that welcomes all people to lead healthy and active lives.

Yarra Junction Recreation Reserve will be a place:

- For social and active play by families that caters for all;
- For sport and recreation participation;
- That welcomes and includes all people and encourages healthy activity and wellbeing;
- Fostering friendships for life and community connectivity;
- That is a safe place for people to connect with community and access a range of services;
- That is environmentally conscious buildings; and
- That connects the activity areas within the reserve and beyond to the Little Yarra River, township and residential areas.

Activities supported by the master plan are:

- Senior and junior, men's and women's sport training and competition across football, cricket, netball, tennis, bowls, basketball and table tennis;
- Swimming, fitness and water play;

- Play for children and young people;
- Social gathering between family and friends, young people and people disadvantaged in our community;
- Community celebrations and events;
- Active recreation including walking, running, dog walking, riding, skating and social sports play;
- Learn how to ride and bike skills development; and
- School PE curriculum and training programs.

KEY CHALLENGES

1,500+

1,500+ players participate in sport at Yarra Junction Recreation Reserve



New groups like female Australian Rules football and personal fitness training introduced to reserve



18 School Sports Victoria program events for students in the Upper Yarra District

26%

26% or residents don't meet minimum guidelines for physical activity

163,400+

163,400+ visits, over 1000 health and fitness members and 570 aquatic education members use the Yarra Centre

Upper Yarra has a high rate of people from social and economic disadvantage



17% growth in Yarra Junction community, growing from 5,375 people in 2016 to reach 6,419 in 2041



Buildings are in a poor condition and not fit for purpose. They are in need replacement or improvement to welcome all ages, abilities, genders and cultures.

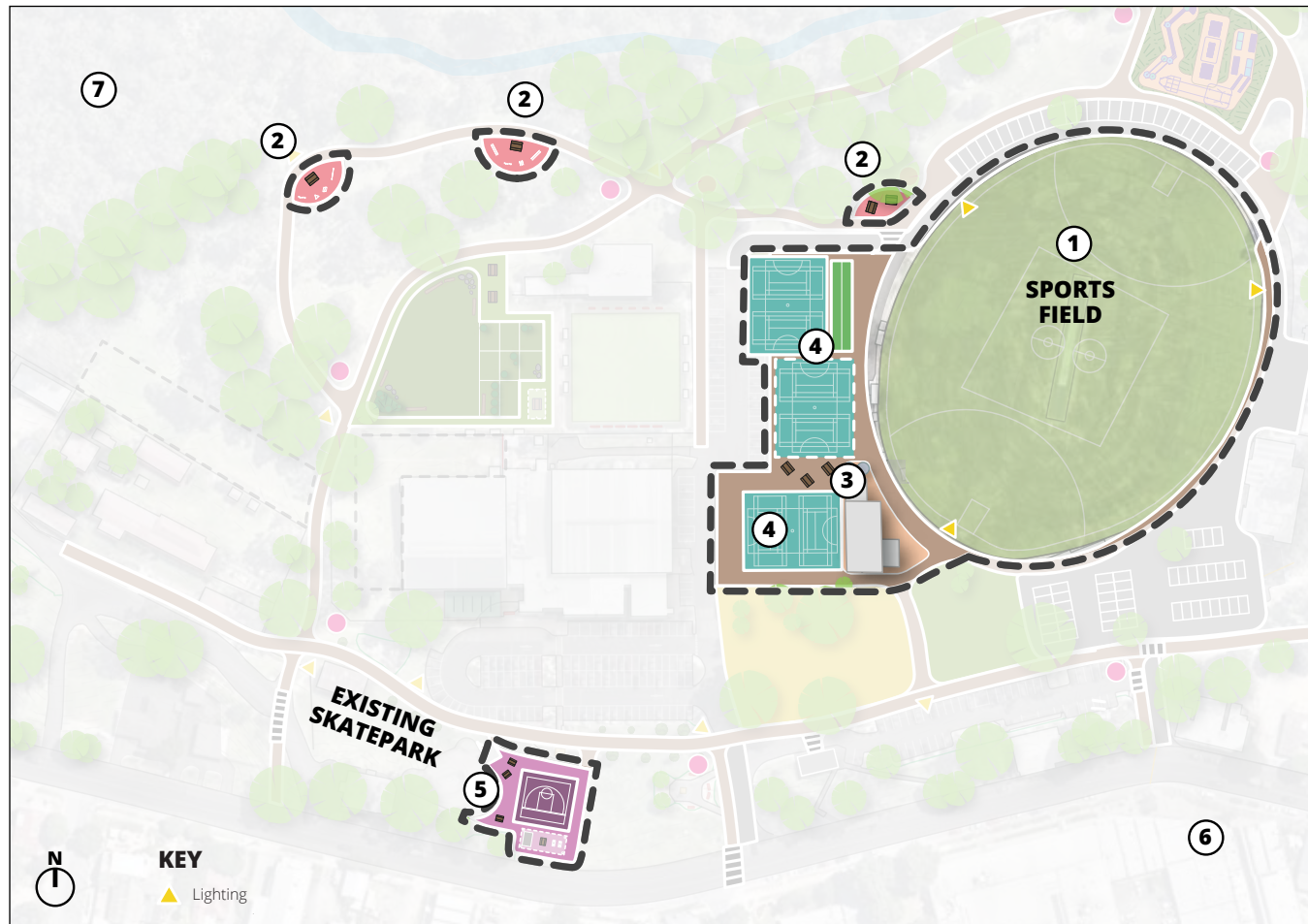
1 in 3 adults

1 in 3 adults are overweight



WHAT COULD BE DELIVERED?

SPORTS PLAN



Objectives

- 1 Upgrade sport field drainage and surface upgrade, lighting, scoreboard and coaches boxes.
- 2 Provide activities to encourage fitness and social use along Recreation Paths.
- 3 Relocate Pavilion to increase interaction with Sports Field and Multi-Sports Courts. Increase change facilities, toilets and community function rooms. Provide undercover area for spectators as part of the Pavilion Development process.
- 4 Upgrade courts 3 and 4 as compliant multi-sport courts for tennis and netball. Enclose two courts in long term to accommodate future growth in indoor sports. Light all courts. Provide indoor or covered courts.
- 5 Provide a multi-sport activity area with basketball and netball rings and hit up wall together with a sheltered stage for festivals, music concerts and youth hang out area. Consider BBQ.
- 6 Explore investment in a nearby school oval with training lights to provide a second oval.
- 7 Investigate potential opportunities for mountain bike flow track in bushland reserve.

SPORTS PLAN IMPLEMENTATION

The implementation table details the estimated capital cost of recommendations and a proposed timeframe for delivery to help inform Yarra Ranges Council's long term financial planning.

The priorities are based on the following:

- Short Term 0-2 years
- Medium Term 3-5 years
- Long Term 6-10 years
- Ongoing.

Recommendation – Capital Improvements	Project Cost Estimate	Timeframe	Council \$	Government \$	Community/ Business \$
Upgrade sports field drainage and surface upgrade, lighting, scoreboard and coaches' boxes	\$400,000	Medium	\$375,000		\$25,000 (Yarra Junction Football and Cricket Clubs)
Provide activity areas to encourage fitness and social use along recreation paths	\$120,000	Short	\$120,000		
Relocate Pavilion to increase interaction with Sports Field and Multi-Sports Courts. Increase change facilities, toilets and community function rooms. Provide undercover area for spectators as part of the Pavilion Development process.	\$QS required once scope determined Allow \$3,000,000 (Benchmark cost)	Medium	\$2,450,000	\$500,000 (Sport and Recreation Victoria – Female Friendly Funding Program)	\$50,000 (Yarra Junction Sporting Groups & Community Fundraiser)
Upgrade courts 3 and 4 as compliant multi-sport courts for tennis and netball. Enclose two courts in long term to accommodate future growth in indoor sports. Light all courts. Provide indoor or covered courts.	\$400,000 \$QS required for enclosing two courts	Short	\$375,000		\$25,000 (Yarra Junction Netball and Tennis Clubs)
Provide a multi sport activity area with basketball and netball rings and hit up wall together with a sheltered stage for festivals, music concerts and youth hang out area. Consider BBQ.	\$200,000	Medium	\$100,000	\$100,000 (Sport and Recreation Victoria – Minor Facilities Funding Program)	
Explore investment in a nearby school oval with training lights to provide a second oval.	\$200,000	Short	\$200,000		
Investigate potential opportunities for mountain bike flow track in bushland reserve.	\$200,000	Long	\$200,000		

Please note:

- The above figures are indicative and do not include allowances for preliminaries, contingencies and fees and charges.

AQUATIC & COMMUNITY PLAN



Objectives

- 1 Support the Yarra Junction Community and Cultural Precinct Master Plan. Aim to reduce conflict between pedestrians and cyclists by increasing visibility and reducing pinch points along the Trail. Reduce fencing and open up area surrounding the Upper Yarra Museum entrance.
- 2 Define paths and add signage to increase awareness of Recreation Paths.
- 3 Install new nature and adventure play space with picnic tables, shade and barbecue with interaction with Little Yarra River.
- 4 Expand the township play space into the reserve area and soften fence boundary between play space and reserve, multi sports courts and pavilion.
- 5 Investigate alternative uses for the disused bowling green as a community activity space. Clear surrounding vegetation to increase visibility and connectivity to reserve.
- 6 Area for possible expansion of the Yarra Centre, to be determined in the Valley Feasibility Study.
- 7 Increase visibility, signage and connecting paths to facilities around the site.
- 8 Improve traffic management and car parking including pedestrian safety signage where cars cross Rail Trail and across Warburton Highway to the reserve, bus zones and turning areas including widening access and egress to the reserve. Maintain two way traffic on game day. Manage traffic management during the week with buses and maintenance vehicles.

AQUATIC & COMMUNITY PLAN



Objectives

- ⑨ Feasibility and redevelopment of the Yarraburn Centre to offer a flexible community program spaces, administration and consulting spaces or consolidate within developed community pavilion.
- ⑩ Detailed investigation into a safe pedestrian crossing over Warburton Highway.
- ⑪ Remove Gem building.
- ⑫ Provide bike storage area.
- ⑬ Feasibility review into future options for rail trail building in reserve. Consider best community or commercial use activities.
- ⑭ Incorporate cultural and indigenous heritage into the scope and design process.
- ⑮ Consider expanded museum site in line with precinct plan. This action should consider a fencing solution that integrates museum into reserve.
- ⑯ Link path into existing path in adjacent bushland reserve.



AQUATIC & COMMUNITY PLAN IMPLEMENTATION

The implementation table details the estimated capital cost of recommendations and a proposed timeframe for delivery to help inform Yarra Ranges Council's long term financial planning

The priorities are based on the following:

- Short Term 0-2 years
- Medium Term 3-5 years
- Long Term 6-10 years
- Ongoing.

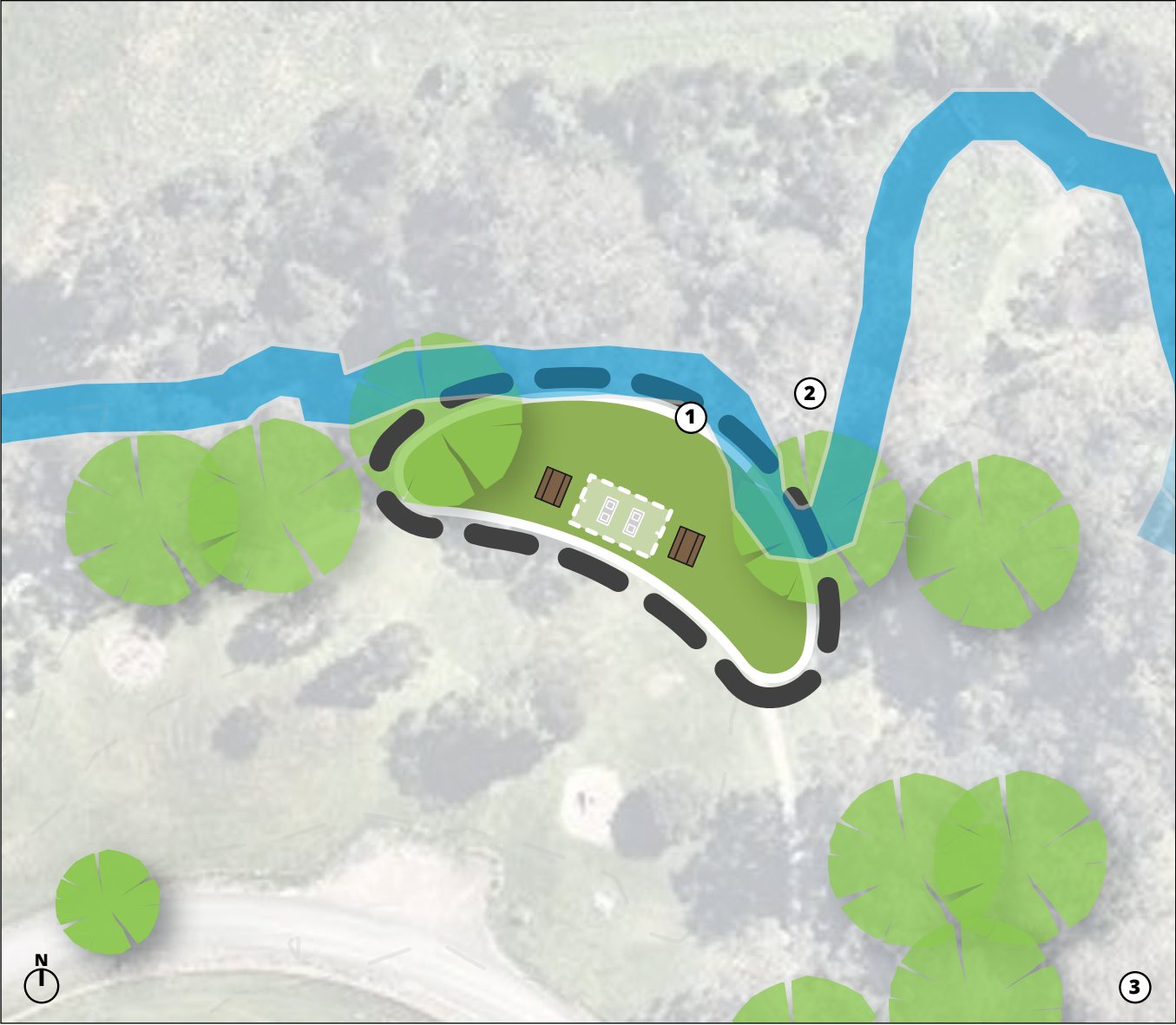
Recommendation – Capital Improvements	Project Cost Estimate	Timeframe	Council \$	Government \$	Community/ Business \$
Support the Yarra Junction Community and Cultural Precinct Master Plan. Aim to reduce conflict between pedestrians and cyclists by increasing visibility and reducing pinch points along the Trail. Reduce fencing and open up area surrounding the Upper Yarra Museum entrance	Path treatment included in 2	Long	✓	✓ (Heritage Victoria)	✓ (Upper Yarra Museum)
Define paths and add signage to increase awareness of recreation paths	\$560,000	Short	\$560,000		
Install new nature and adventure play space with picnic tables, shade and barbecue with interaction with Little Yarra River	\$500,000	Medium	\$450,000		\$50,000 (Community Fundraiser)
Expand the township play space into the reserve area and soften fence boundary between play space and reserve, multi sports courts and pavilion	\$250,000	Long	\$250,000		
Investigate alternative uses for the disused bowling green as a community activity space. Clear surrounding vegetation to increase visibility and connectivity to reserve.	\$200,000	Long	\$150,000		\$50,000 (Community Fundraiser)
Area for possible expansion of the Yarra Centre, to be determined in the Valley Feasibility Study.	\$QS required once scope determined	Long	✓	✓ (Sport and Recreation Victoria – Small Aquatic Facility Funding Program)	✓ (Community Fundraiser)
Increase visibility, signage and connecting paths to facilities around the site.	\$100,000	Short	\$100,000		
Improve traffic management and car parking including pedestrian safety signage where cars cross Rail Trail and across Warburton Highway to the reserve, bus zones and turning areas including widening access and egress to the reserve. Maintain two way traffic on game day. Manage traffic management during week with buses and maintenance vehicles.	\$750,000	Medium	\$750,000		
Feasibility and redevelopment of the Yarraburn Centre to offer a flexible community program spaces, administration and consulting spaces or consolidate within developed community pavilion.	\$20,000	Medium	\$20,000		

Recommendation – Capital Improvements	Project Cost Estimate	Timeframe	Council \$	Government \$	Community/ Business \$
Detailed investigation into a safe pedestrian crossing over Warburton Highway	\$50,000	Short	\$50,000		
Remove Gem building	\$5,000	Medium	\$5,000		
Provide bike storage areas	\$15,000	Short	\$15,000		
Feasibility review into future options for Rail Trail buildings in reserve. Consider best community or commercial use activities	\$20,000	Long	\$20,000		
Incorporate cultural and indigenous heritage into the scope and design process	Included in capital works item cost	Ongoing			
Consider expanded Upper Yarra Museum site to include the wood chopping area, in line with precinct plan. This action should consider a fencing solution that integrates museum into the reserve	\$80,000	Long	✓		✓ (Upper Yarra Museum)
Link path into existing path in adjacent bushland reserve.	Cost included in above				

Please note:

- The above figures are indicative and do not include allowances for preliminaries, contingencies and fees and charges.

BIODIVERSITY & RIVER PLAN



Objectives

- 1 Partner with Melbourne Water in improving the Little Yarra River streamside to maintain managed access to the waterway for kayaking and wading and maintain conservation and landscape values.
- 2 Partner with Melbourne Water in improving storm water treatment through water sensitive urban design treatments along the Yarra Junction drain through the reserve.
- 3 Explore carbon management and catchment opportunities in development options.



BIODIVERSITY & RIVER PLAN IMPLEMENTATION

The implementation table details the estimated capital cost of recommendations and a proposed timeframe for delivery to help inform Yarra Ranges Council's long term financial planning

The priorities are based on the following:

- Short Term 0-2 years
- Medium Term 3-5 years
- Long Term 6-10 years
- Ongoing.

Recommendation – Capital Improvements	Project Cost Estimate	Timeframe	Council \$	Government \$	Community/ Business \$
Partner with Melbourne Water in improving storm water treatment through water sensitive urban design treatments along the Yarra Junction drain through the reserve.	\$QS required once scope determined with MW	Ongoing	✓	✓ (Melbourne Water)	
Partner with Melbourne Water in improving the Little Yarra River streamside to maintain managed access to the waterway for kayaking and wading and maintain conservation and landscape values	Cost included in above	Ongoing	✓	✓	
Explore carbon management and catchment opportunities in development options.	Included in capital works item cost	Ongoing			

Please note:

- The above figures are indicative and do not include allowances for preliminaries, contingencies and fees and charges.