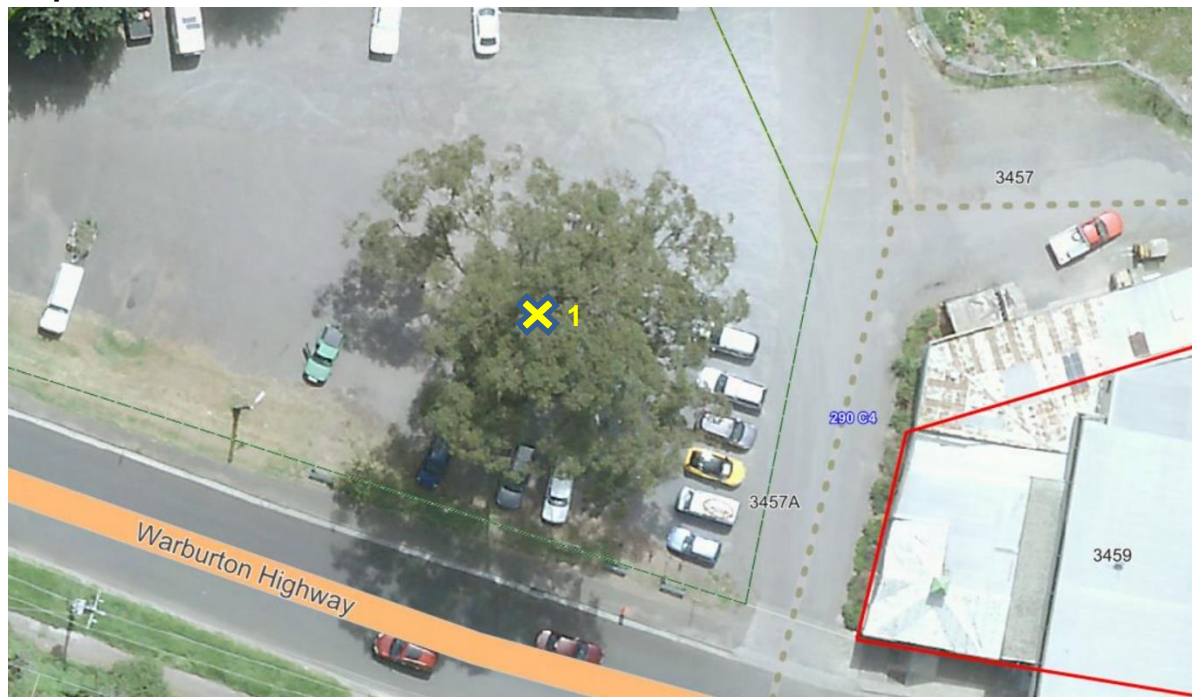


## TREE INSPECTION REPORT

<b>Report number:</b> 24669	<b>Site address of tree:</b> 3459 Warburton Highway, Warburton	
<b>Date of inspection:</b> 27/11/2022	<b>Melway:</b> 290 C4	
<b>Name:</b>	<b>Address:</b>	<b>Phone:</b>
<b>Recommended action:</b> Remove tree, second opinion requested		
<b>Reasons for recommended action:</b> <p>The tree is large and prominent, it has been cabled twice along the codominant stems. the trunks are now likely to be being held together by the cables rather than as supplementary support.</p> <p>The crack on the northside is now down to the root flare and there are small soil cracks. The 1m probe could be inserted the full length into the crack.</p> <p>The western stem has a significant split and cavity from 3-7m along the trunk. Numerous black Ants were evident suggesting additional cavities not spotted.</p> <p>The larger stem has a patch of decay at the base.</p> <p>This tree has been in a state of structural decline for some time. Determination of retention should be based on any signs of change in structure, not just the way it presents today.</p>		
<b>Risk &amp; works priority:</b> Moderate		<b>Site conditions &amp; equipment required:</b> EWP access in the carpark. A large exclusion zone would be required.

### Map:



<b>Age:</b> Mature		<b>Common name:</b> Mountain Grey Gum		<b>Botanical name:</b> <i>E. cypellocarpa</i>	
<b>Tree No.</b> 1	<b>Height (m)</b> 33	<b>Spread (m)</b> 20		<b>DBH (mm)</b> 268	
<b>Roots condition:</b> Growing in asphalt/gravel car park			<b>Trunk condition:</b> Poor, decay at base. codominant split to ground level through root flare. Crack in western stem at 3-7m. Cavity in eastern stem at 5m. Codominant stems cabled.		
<b>Limbs condition:</b> Fair, previously pruned, failures evident			<b>Foliage condition:</b> Good		
Amenity value: High			<b>Habitat:</b> <i>Part of habitat corridor:</i> No <i>Hollow bearing:</i> Yes <i>Native Fauna Use:</i> Likely		
<b>Distance to building (m):</b> ~25		<b>Do branches overhang buildings?</b> No		<b>Targets</b>  Carpark, cars, pedestrians.	
<b>Company:</b> Ryder Consulting		<b>Name:</b>		<b>Date report written up:</b> 27/11/2022	

Photo 1



Tree 1 with crack to ground level (inset)



Photo 2



Split in western stem and cavity in eastern stem